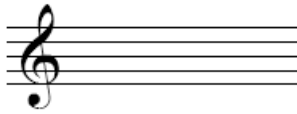



a. French augmented sixth chord in the key of C major. Label normal order and prime form of this chord.



A blank musical staff with a treble clef, consisting of five horizontal lines and a single vertical line on the left side.



A musical score for the song 'The Rose Tree'. It consists of two staves, a treble staff and a bass staff, both in the key of D major (indicated by two sharps: F# and C#) and 2/4 time. The melody is written in the treble staff, and the bass line is in the bass staff. The piece is 8 measures long. The first four measures contain the main melody and bass line, and the last four measures are a final chordal cadence.

3. For each of the following examples, provide a short description of compositional techniques employed. Apply appropriate terminology from the Kostka book. Your objective is to provide labels for the kinds of musical materials used, not a detailed note-by-note analysis.

a. John Adams. Nixon in China, “This is prophetic”

Tempo I (♩ = 96)

f brilliant

sim.

4

b. Ernst Krenek. Suite for cello solo

Andante affettuoso ♩ = 72

p *mf* *mp*

5 *accel.* *a tempo* *f*

Più lento ♩ = 60 *arco* *arco* *sul pontic.*

p *pizz.* *pizz.* *p*

c. Henry Cowell. “Tiger” for solo piano

Allegro feroce. (1928)

ff

6

Vivace, molto ritmico [♩ = 168]

Soprano

Vibraphone

Contrabass

[tune E string down to Eb]

Soprano

Vibraphone

Contrabass

Crumb: Madrigals, Book I [1965], No. I, "To see you naked is to remember the earth," mm. 1-6 (© 1971 by C. F. Peters Corporation.
Used by permission.)