

1. Write the following scales, using key signatures and accidentals as needed.



C# melodic minor

G harmonic minor

2. Write intervals above the given pitches. Do NOT change the given pitches.



M3

P4

m2

M2

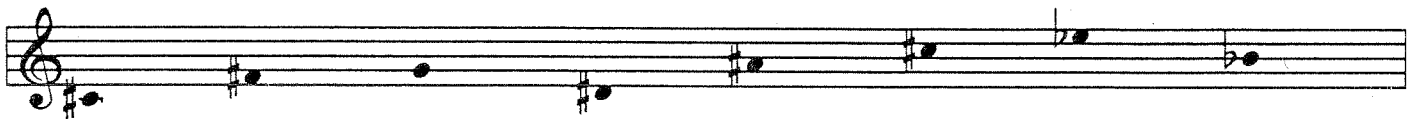
M7

+4

P5

M6

3. Write triads above the given pitches.



dim

M

m

M

+

dim

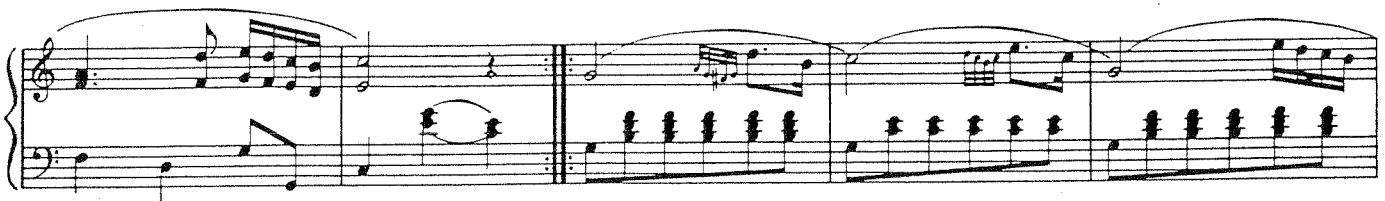
M

m

4. Provide analysis for the excerpt below. Label all harmonies, nonharmonic tones, and cadences.

Carl Maria von Weber

*Amoroso*



MORE →

1. Resolve the following strictly or freely as indicated. Analyze fully.

Musical score for exercise 1, showing four measures of piano accompaniment. The key signature is B-flat major. The first measure is labeled "strict". The second measure is labeled "free". The third measure is labeled "strict". The fourth measure is labeled "free strict".

2. Complete in 4-part choral style following the given figured bass. Use a few nonharmonic tones and label them. Analyze all chords and label the cadence.

Musical score for exercise 2, first system. The key signature is A major. The bass clef staff contains a figured bass line with the following figures:  $\frac{6}{4}$ , 3, 6, #, 6, 6, 7, #.

Musical score for exercise 2, second system. The key signature is B-flat major. The bass clef staff contains a figured bass line with the following figures: 6, 6, 4, 6, 6, 6, 4, 7, 4.

3. Harmonize the given soprano in 4-part choral style, using chords we have studied this semester. Use a few nonharmonic tones and analyze fully.

Musical score for exercise 3, showing a soprano line in a treble clef staff and an empty piano accompaniment staff. The key signature is B-flat major. The soprano line consists of the following notes: G4, A4, Bb4, C5, Bb4, A4, G4, F4, E4, D4.