

The graphic features a low-angle shot of a skyscraper against a blue sky with clouds. This central image is framed by several large, overlapping red geometric shapes: a circle on the left, a triangle at the top, and a large triangle at the bottom. The background is a faint, red-tinted map of Houston. The title 'HOUSTON GPs' is centered in large white letters, with 'GPs' in a slightly larger font than 'HOUSTON'.

HOUSTON GPs

GUIDED PATHWAYS TO SUCCESS



PARTNERSHIPS

COLLABORATIVE PARTNERSHIP WITH THE FOLLOWING
FOUR AND TWO YEAR INSTITUTIONS

UNIVERSITY of
HOUSTON

UHV
UNIVERSITY OF
HOUSTON - VICTORIA

COM
College of the Mainland

TSU
TEXAS SOUTHERN UNIVERSITY

UHD
University of Houston
DOWNTOWN

VC VICTORIA
COLLEGE
Est. 1925

ACC
ALVIN COMMUNITY COLLEGE

SJ SAN JACINTO
COLLEGE
Your Goals. Your College.

HCC
HOUSTON COMMUNITY COLLEGE

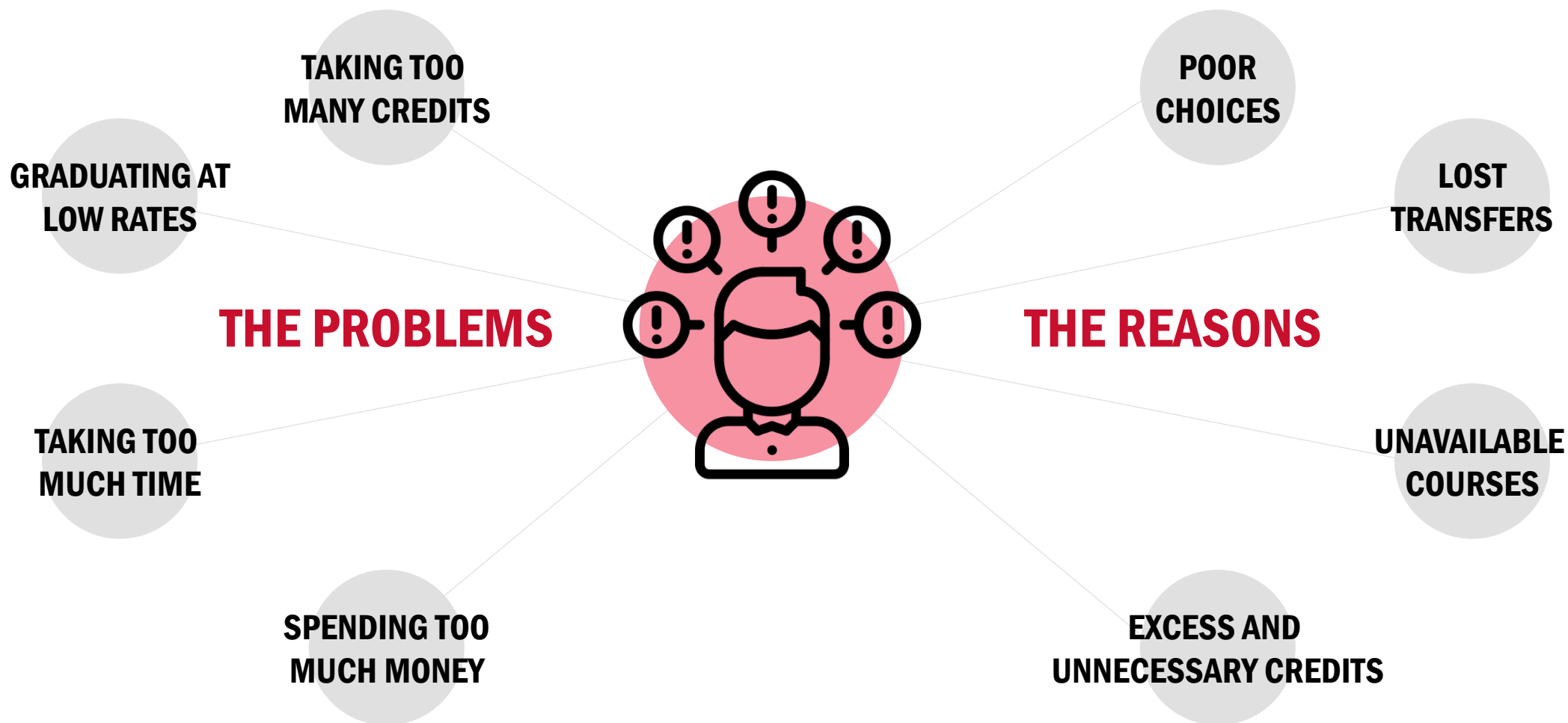
LSC
LONE STAR
COLLEGE

WJC Wharton County
Junior College

UCL
University
of Houston
Clear Lake

GC
Galveston
College







Houston GPS

Guided Pathways to Success for Houston-area College Students

Memorandum of Understanding

This Memorandum of Understanding is entered into by and between Complete College America and the University of Houston, the University of Houston Downtown, the University of Houston Clear Lake, Houston Community College, Lone Star College System, San Jacinto College District, and Wharton County Junior College to establish an agreement for collaboration and consultation in support of the implementation of Houston GPS.

All signatories to this agreement understand that Houston GPS is an integrated system of cohesive strategies that must be implemented collectively in order to accomplish the full benefits of the effort, namely significant improvement in college completion rates and substantial narrowing of attainment gaps. Accordingly, all institutions participating in Houston GPS will apply maximum effort toward implementation of all of the component strategies listed below.

Further it is understood that a steering group composed of the chancellors and presidents of the participating institutions will in consultation with Complete College America make the final decisions relative to the development of the comprehensive strategies that guide Houston GPS. Chancellors and presidents will designate working groups that operationalize and implement the strategies.

This agreement shall be effective beginning with the date of the last signature appearing upon the satisfactory implementation of Houston GPS.

Houston GPS participants shall implement:

ALIGNED MATHEMATICS

- All programs of study will contain mathematics most appropriate for associated careers. Programs that do not require Calculus should not include College Algebra.

Stan Jones
Stan Jones, President, Complete College America

7/10/14
Date

Renu Khator
President, University of Houston

7/10/14
Date

[Signature]
President, University of Houston Downtown

7/16/2014
Date

William A. Stigler
President, University of Houston Clear Lake

7/9/14
Date

Tom Walden
Chancellor, Houston Community College

07/14/14
Date

Richard Crum
Chancellor, Lone Star College System

7.15.2014
Date

Brenda Weems
Chancellor, San Jacinto College District

7/15/14
Date

Boyd A. McCarroll
President, Wharton County Junior College

7/11/14
Date

GOALS

Boost postsecondary attainment, and **increase completion and successful transfer rates** in the Houston region.

Build a culture of timely graduation that will **save everyone time and money** most importantly our students.

Provide a timely, structured, and seamless pathway for students transferring from Gulf **Coast-Houston area community colleges to Houston area universities.**



STRATEGIES

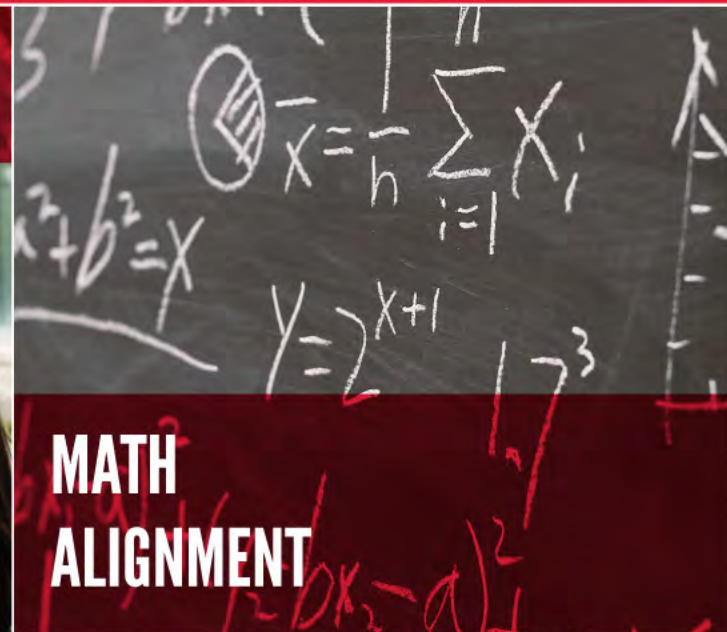


**COREQUISITE
REMEDiation**



**STRUCTURED
SCHEDULES**

TECHNOLOGY



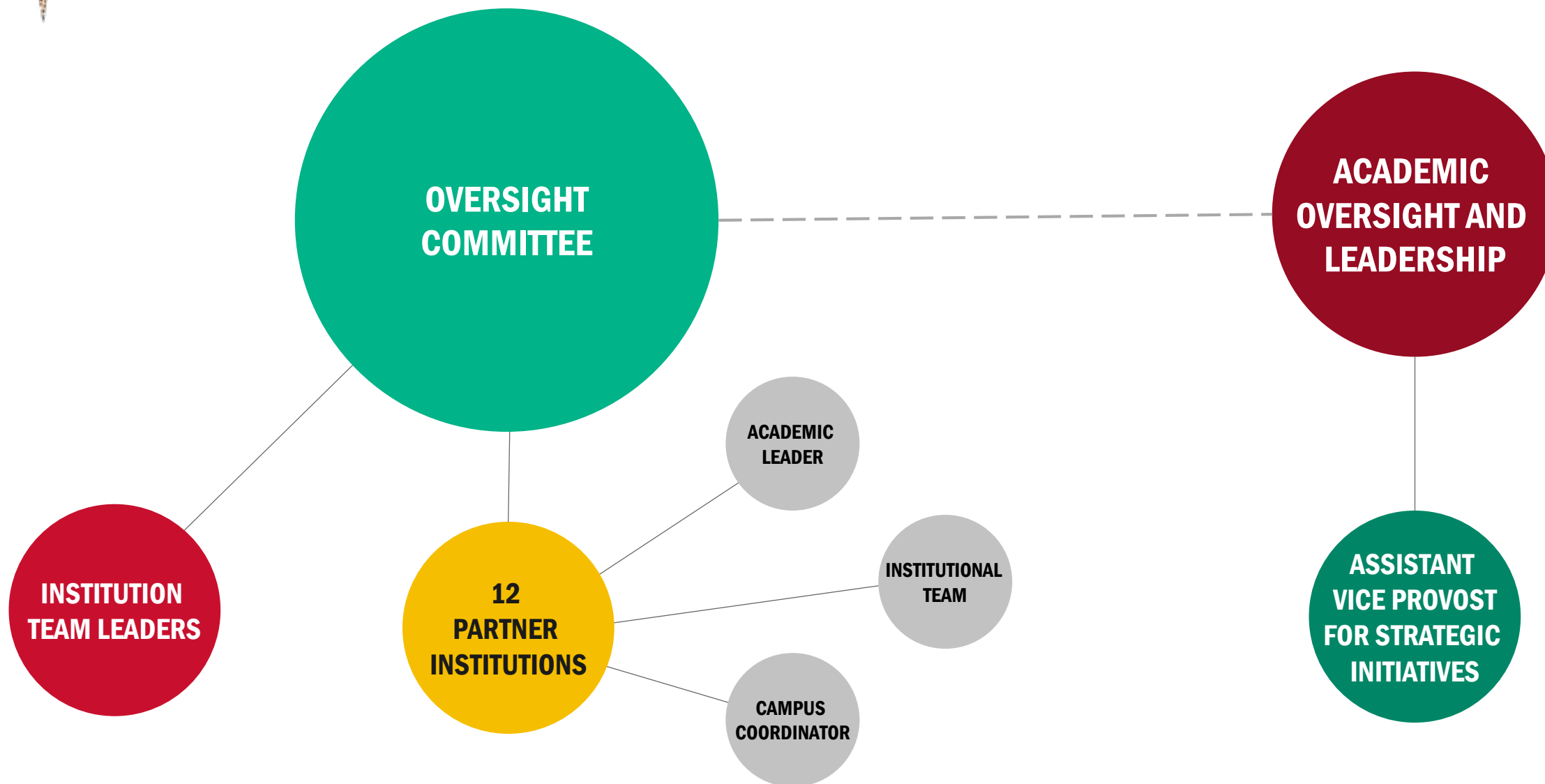
**MATH
ALIGNMENT**

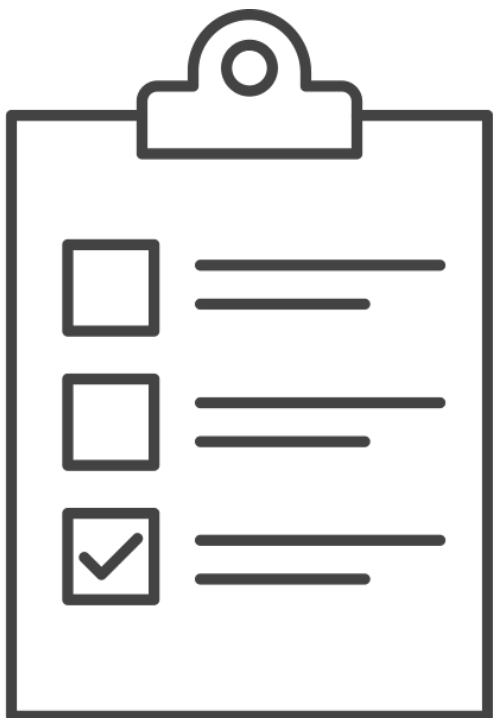


**PROACTIVE ADVISING
AND INFORMED CHOICE**



**META-MAJORS AND
DEGREE MAPS**





1

MATH PATHWAYS COMPLETED

2

DEGREE MAP ASSESSMENTS CONDUCTED

3

PREDICTIVE ANALYTICS TECHNOLOGY PUT INTO PLACE

4

PROACTIVE ADVISING PRACTICES UTILIZED

5

INFORMED CHOICE INTERVENTIONS OFFERED

6

COREQUISITE MODELS DELIVERED

7

TRANSFER PORTAL IN PROCESS

METRICS TO SUCCESS

