

UNIVERSITY OF HOUSTON
OFFICE OF INSTITUTIONAL RESEARCH

GULF COAST CONSORTIUM

TRANSFER STUDENT ENROLLMENT REPORT

Susan E. Moreno, Ph. D.

Shireen Hayatghaibi

June 20, 2008

University of Houston
Gulf Coast Consortium Transfer Student Enrollment Report
First Time Transfers from Gulf Coast Consortium Institutions
Six Year Enrollment Trend, Fall 2002 - Fall 2007

Institution	FALL 2002		FALL 2003		FALL 2004		FALL 2005		FALL 2006		FALL 2007	
	N	%	N	%	N	%	N	%	N	%	N	%
Alvin Community College	32	1.3	24	0.9	35	1.3	33	1.2	38	1.4	13	0.5
Brazosport College	29	1.2	27	1.0	32	1.2	35	1.3	18	0.6	25	1.0
College of the Mainland	25	1.0	23	0.9	22	0.8	33	1.2	31	1.1	22	0.9
Galveston College	6	0.3	7	0.3	9	0.3	5	0.2	5	0.2	12	0.5
Houston Community College District	663	27.1	745	28.5	732	26.9	758	27.7	747	26.5	718	27.7
Lee College	27	1.1	29	1.1	27	1.0	34	1.2	26	0.9	31	1.2
Lone Star College System*	426	17.4	423	16.2	469	17.3	510	18.7	543	19.3	544	21.0
San Jacinto College	223	9.1	231	8.8	245	9.0	288	10.5	269	9.6	202	7.8
Wharton County Junior College	77	3.2	115	4.4	116	4.3	108	4.0	106	3.8	87	3.4
Total GCC Institutions	1508		1624		1687		1804		1783		1654	
Total Other Transfer Institutions	937		990		1030		931		1032		942	
Total New Transfer Students	2445		2614		2717		2735		2815		2596	
Percent of First New Transfer Students from a GCC Institution	61.7		62.1		62.1		66.0		63.3		63.7	

Note: Data for this report is from the CBM001 report submitted to the Texas Higher Education Coordinating Board each semester. First Time Transfers are undergraduate students who previously attended a higher education institution and are in the first semester at UH. This report includes degree seeking first time transfer students.

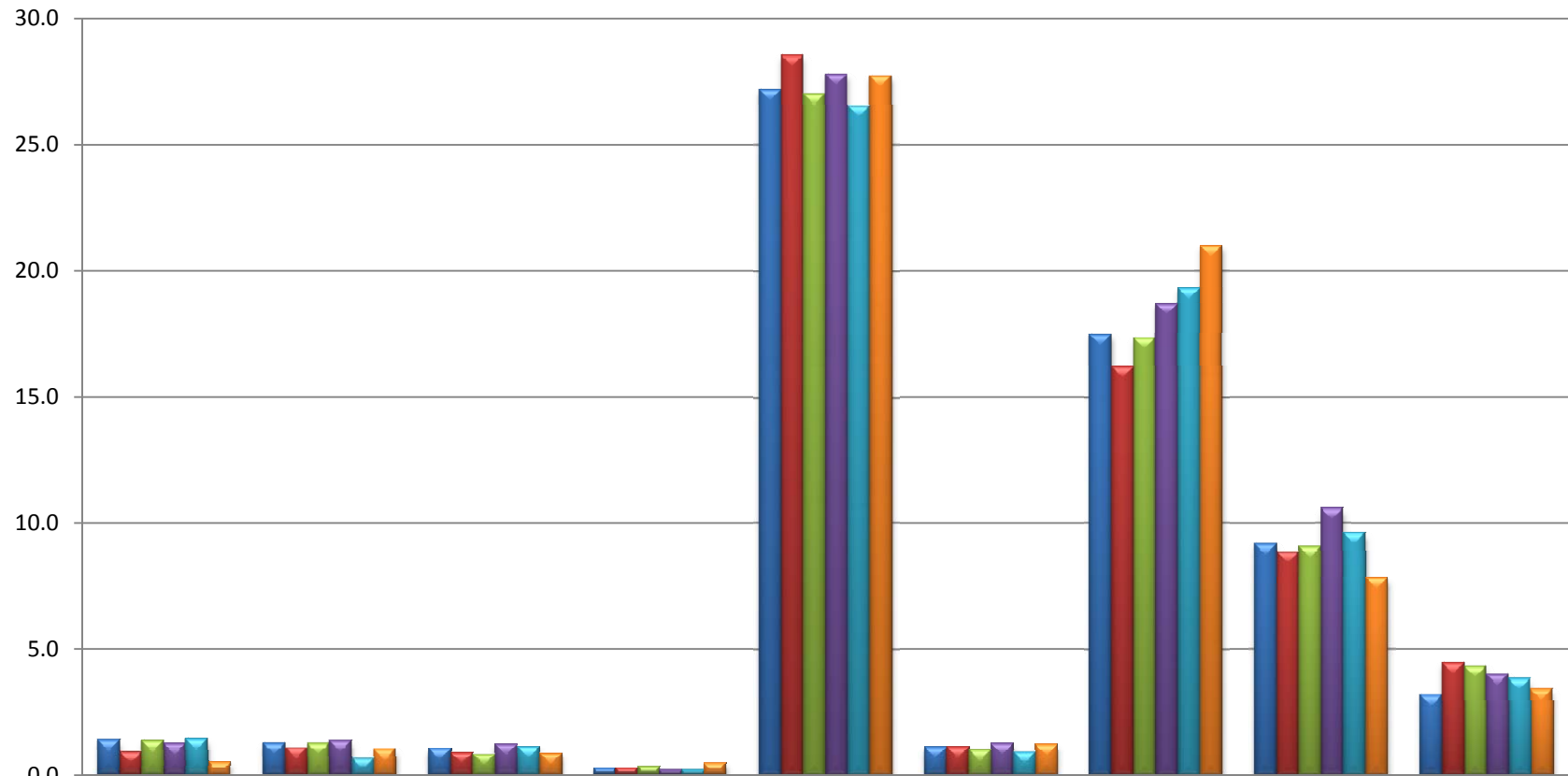
* Lonestar College was previously named North Harris Montgomery Community College District

Acknowledgement:

Our thanks to the University of Houston - Clear Lake (UHCL). This report is modeled after a similar report that UHCL provides Gulf Coast Consortium institutions.

University of Houston Gulf Coast Consortium Transfer Student Enrollment Report

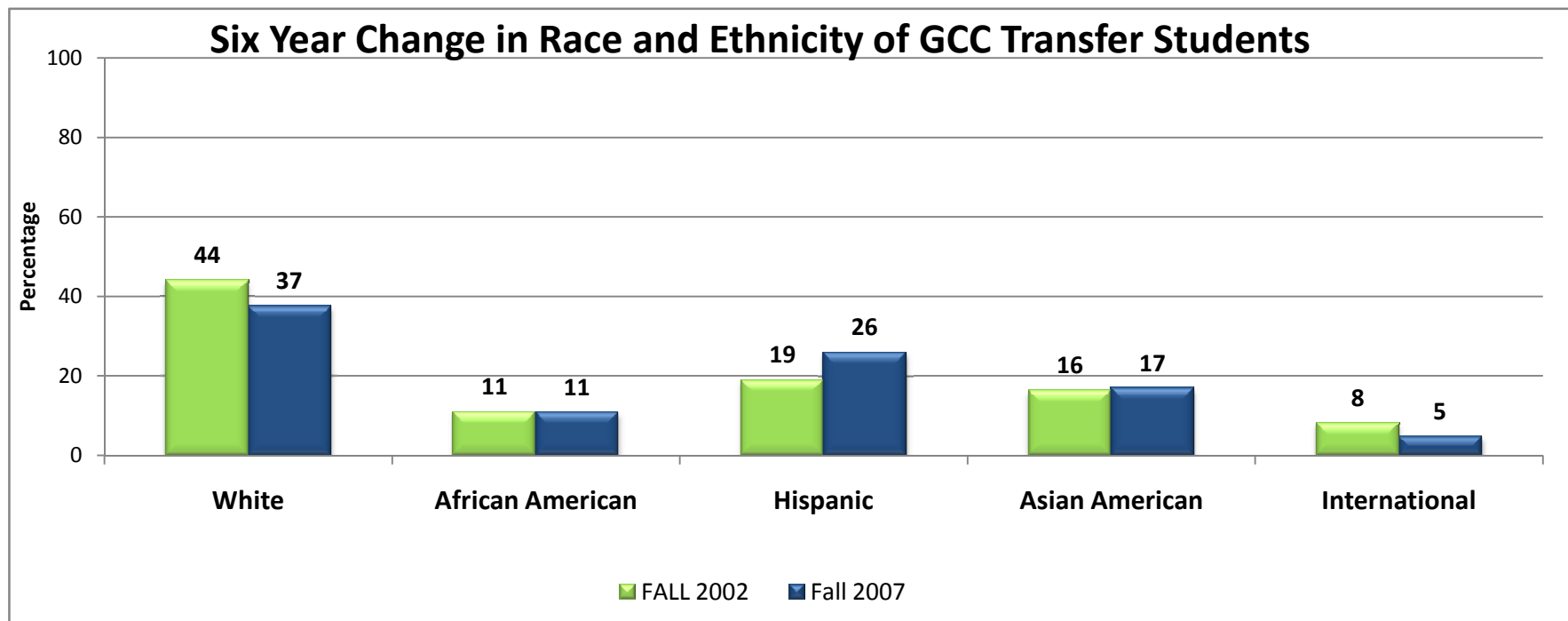
First Time Transfers from Gulf Coast Consortium, Fall 2002 -2007



	Alvin Community College	Brazosport College	College of the Mainland	Galveston College	Houston Community College District	Lee College	Lone Star College System*	San Jacinto College	Wharton County Junior College
FALL 2002	1.3	1.2	1.0	0.3	27.1	1.1	17.4	9.1	3.2
FALL 2003	0.9	1.0	0.9	0.3	28.5	1.1	16.2	8.8	4.4
FALL 2004	1.3	1.2	0.8	0.3	26.9	1.0	17.3	9.0	4.3
FALL 2005	1.2	1.3	1.2	0.2	27.7	1.2	18.7	10.5	4.0
FALL 2006	1.4	0.6	1.1	0.2	26.5	0.9	19.3	9.6	3.8
FALL 2007	0.5	1.0	0.9	0.5	27.7	1.2	21.0	7.8	3.4

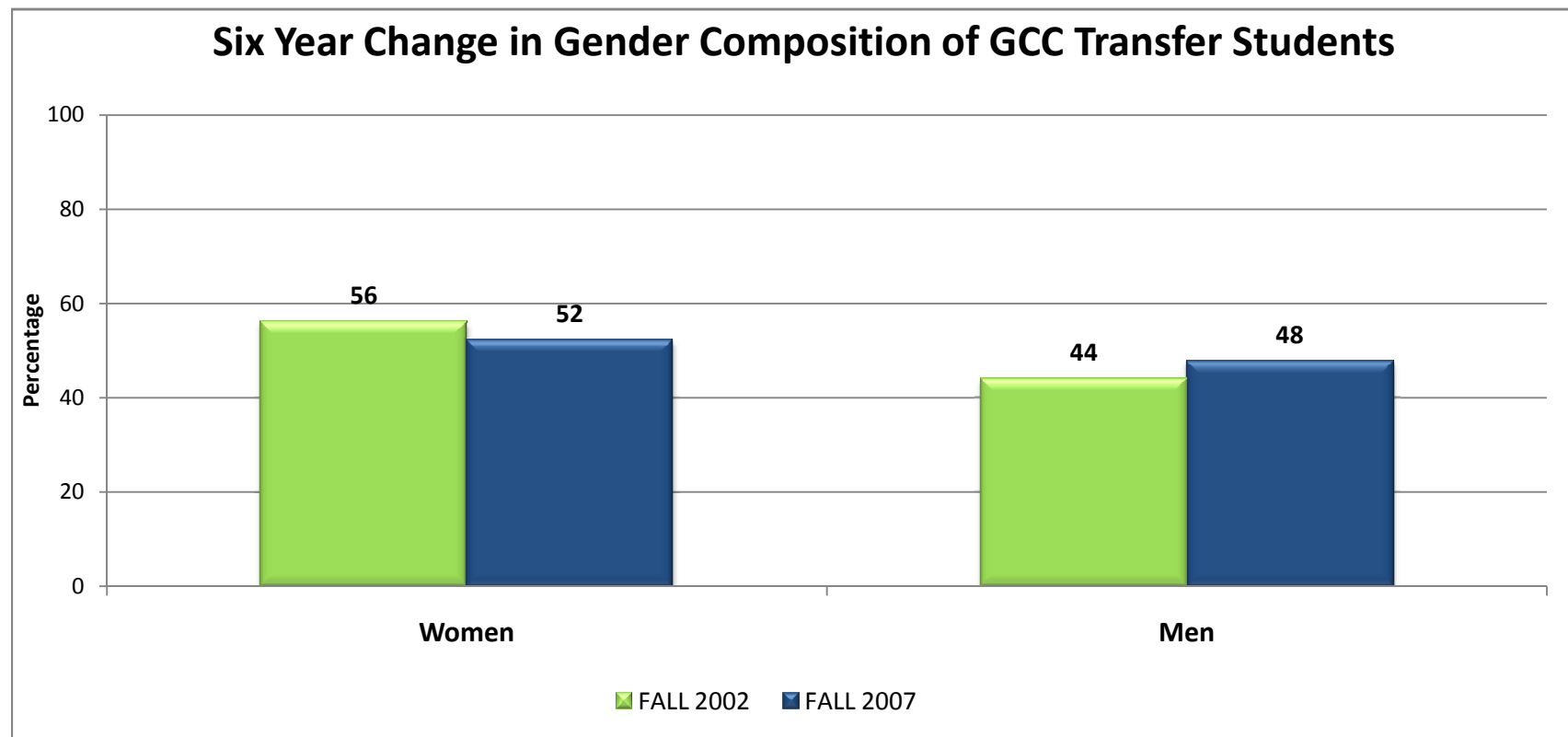
University of Houston
Gulf Coast Consortium Transfer Student Enrollment Report
First Time Transfers from Gulf Coast Consortium
Racial/Ethnic Composition, Fall 2002 - Fall 2007

Race/Ethnicity	FALL 2002		FALL 2003		FALL 2004		FALL 2005		FALL 2006		FALL 2007	
	N	%	N	%	N	%	N	%	N	%	N	%
White	663	44.0	710	43.7	713	42.1	739	41.0	772	43.3	619	37.4
African American	163	10.8	144	8.9	143	8.5	190	10.5	149	8.4	177	10.7
Hispanic	284	18.8	360	22.2	390	23.1	442	24.5	424	23.8	427	25.8
Asian American	243	16.1	252	15.5	285	16.8	290	16.1	321	18.0	277	16.8
International	121	8.0	127	7.8	112	6.6	109	6.0	90	5.1	77	4.7
Native American	7	0.5	2	0.1	8	0.5	8	0.4	8	0.5	5	0.3
Unknown	27	1.8	29	1.8	41	2.4	26	1.4	19	1.1	72	4.4
GCC TOTAL	1508		1624		1692		1804		1783		1654	



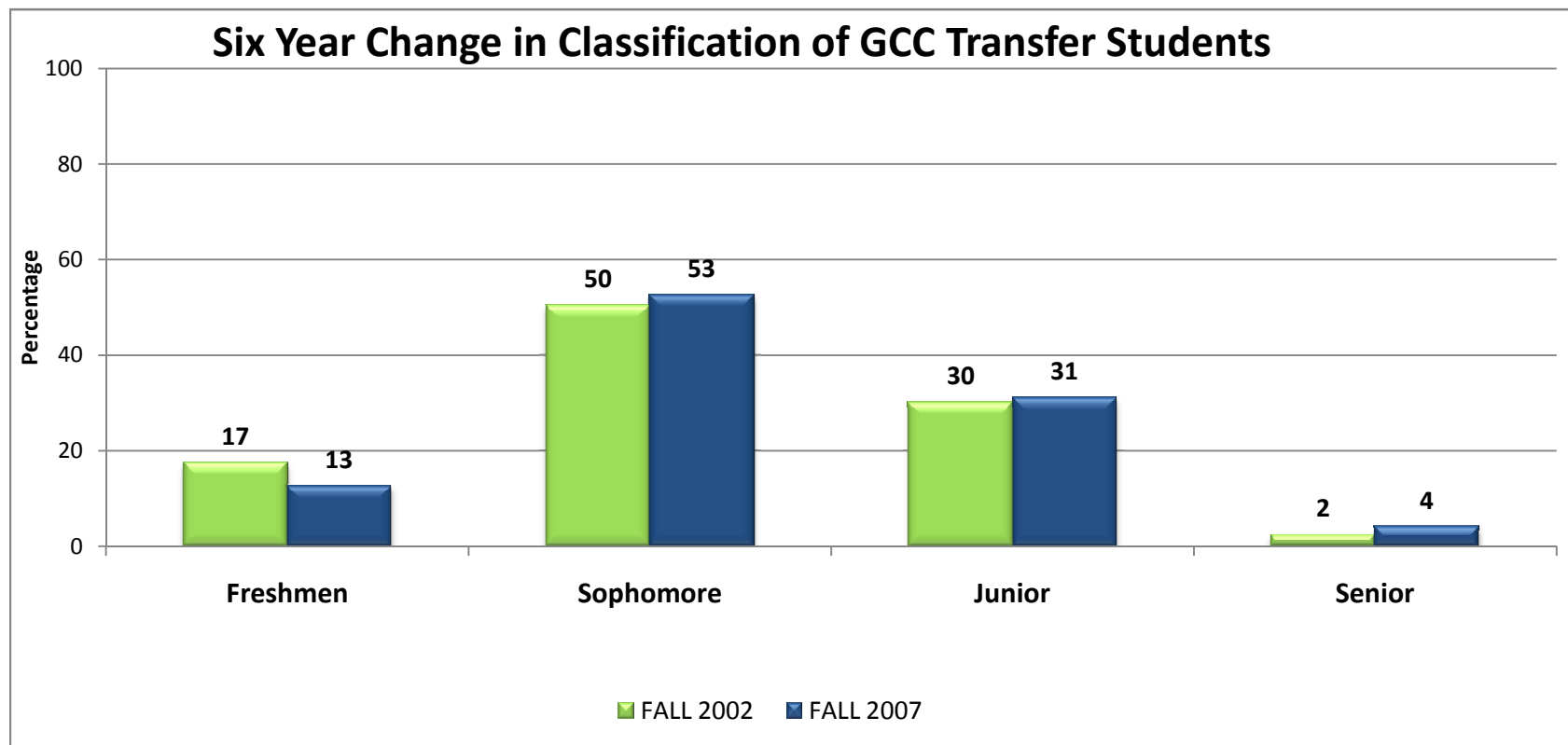
University of Houston
Gulf Coast Consortium Transfer Student Enrollment Report
First Time Transfers from Gulf Coast Consortium
 Gender Composition, Fall 2002 - Fall 2007

Gender	FALL 2002		FALL 2003		FALL 2004		FALL 2005		FALL 2006		FALL 2007	
	N	%	N	%	N	%	N	%	N	%	N	%
Women	846	56.1	887	54.6	884	52.4	989	54.8	925	51.9	864	52.2
Men	662	43.9	737	45.4	803	47.6	815	45.2	858	48.1	790	47.8
Total	1508		1624		1687		1804		1783		1654	



University of Houston
Gulf Coast Consortium Transfer Student Enrollment Report
First Time Transfers from Gulf Coast Consortium
Classifications, Fall 2002 - Fall 2007

Classification	FALL 2002		FALL 2003		FALL 2004		FALL 2005		FALL 2006		FALL 2007	
	N	%	N	%	N	%	N	%	N	%	N	%
Freshmen	262	17.4	227	14.0	232	13.8	208	11.5	177	9.9	207	12.5
Sophomore	758	50.3	830	51.1	811	48.1	876	48.6	858	48.1	869	52.5
Junior	454	30.1	516	31.8	588	34.9	655	36.3	693	38.9	513	31.0
Senior	34	2.3	51	3.1	56	3.3	65	3.6	55	3.1	65	3.9
TOTAL	1508		1624		1687		1804		1783		1654	



University of Houston
Gulf Coast Consortium Transfer Student Enrollment Report

**First Time Transfers from Top 10 Transfer
Institutions
FALL 2007**

Institution	N	%
Houston Community College District	718	27.7
Lone Star College System	544	21.0
San Jacinto College	202	7.8
University of Houston-Downtown	118	4.6
Wharton County Junior College	87	3.4
The University of Texas at San Antonio	59	2.3
Austin Community College	58	2.2
Blinn College	41	1.6
Texas Southern University	35	1.4
Lee College	31	1.2
Total Top 10 Transfer Institutions	1893	
Percent of New Transfer Students from Top 10 Transfer Institutions	72.9	