

Experiences with Faculty: Seniors

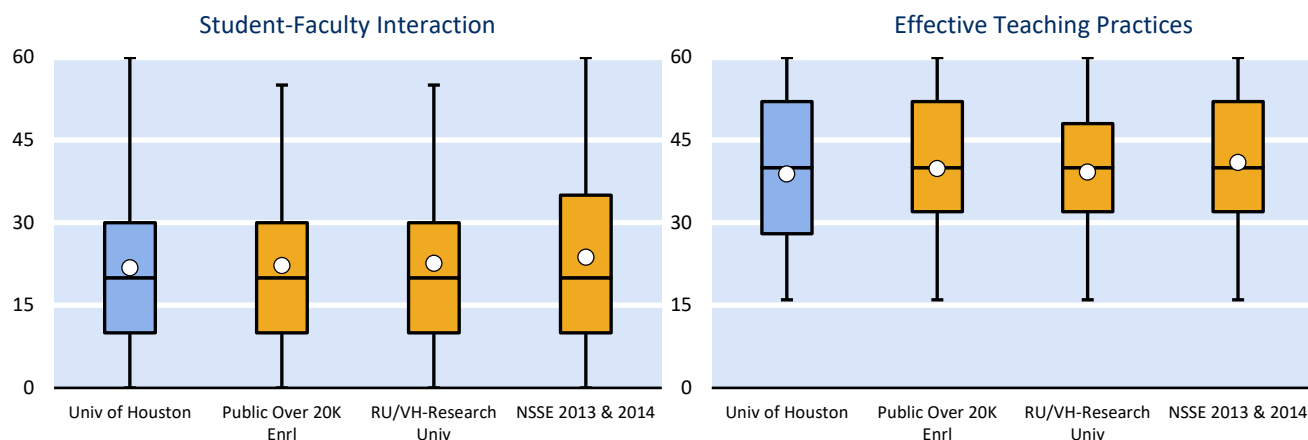
Students learn firsthand how experts think about and solve problems by interacting with faculty members inside and outside of instructional settings. As a result, faculty become role models, mentors, and guides for lifelong learning. In addition, effective teaching requires that faculty deliver course material and provide feedback in student-centered ways. Two Engagement Indicators investigate this theme: *Student-Faculty Interaction* and *Effective Teaching Practices*. Below are three views of your results alongside those of your comparison groups.

Mean Comparisons

Engagement Indicator	Univ of Houston Mean	Your seniors compared with					
		Public Over 20K Enrl Mean	Effect size	RU/VH-Research Univ Mean	Effect size	NSSE 2013 & 2014 Mean	Effect size
Student-Faculty Interaction	21.8	22.2	-.03	22.7	-.05	23.7 *	-.12
Effective Teaching Practices	38.9	39.8	-.07	39.2	-.03	40.9 **	-.15

Notes: Results weighted by institution-reported sex and enrollment status (and institution size for comparison groups); *p<.05, **p<.01, ***p<.001 (2-tailed); Effect size: Mean difference divided by pooled standard deviation; Symbols on the Overview page are based on effect size and p before rounding.

Score Distributions



Notes: Each box-and-whiskers chart plots the 5th (bottom of lower bar), 25th (bottom of box), 50th (middle line), 75th (top of box), and 95th (top of upper bar) percentile scores. The dot represents the mean score. Refer to Detailed Statistics for your institution's sample sizes.

Summary of Indicator Items

Student-Faculty Interaction

Percentage of students who responded that they "Very often" or "Often"...

3a. Talked about career plans with a faculty member	37
3b. Worked w/faculty on activities other than coursework (committees, student groups, etc.)	23
3c. Discussed course topics, ideas, or concepts with a faculty member outside of class	28
3d. Discussed your academic performance with a faculty member	29

Univ of Houston	Public Over 20K Enrl	RU/VH-Research Univ	NSSE 2013 & 2014
%	%	%	%
37	38	39	42
23	24	26	26
28	30	31	33
29	29	28	33

Effective Teaching Practices

Percentage responding "Very much" or "Quite a bit" about how much instructors have...

5a. Clearly explained course goals and requirements	78
5b. Taught course sessions in an organized way	78
5c. Used examples or illustrations to explain difficult points	75
5d. Provided feedback on a draft or work in progress	57
5e. Provided prompt and detailed feedback on tests or completed assignments	60

Notes: Refer to your *Frequencies and Statistical Comparisons* report for full distributions and significance tests. Item numbering corresponds to the survey facsimile included in your *Institutional Report* and available on the NSSE Web site.