



# D-Series Size 0 LED Area Luminaire

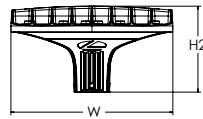
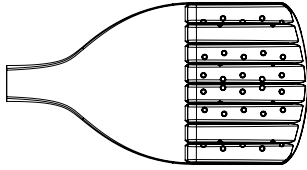


Catalog Number
Notes
Type

d<sup>series</sup>

## Specifications

EPA:	0.44 ft <sup>2</sup> (0.04 m <sup>2</sup> )
Length:	26.18" (66.5 cm)
Width:	14.06" (35.7 cm)
Height H1:	2.26" (5.7 cm)
Height H2:	7.46" (18.9 cm)
Weight:	23 lbs (10.4 kg)



## Ordering Information

DSX0 LED \_\_\_\_\_ 40K 90CRI \_\_\_\_\_ MVOLT MA \_\_\_\_\_ DBLXD

DSX0 LED	Series	LEDs	Color temperature <sup>2</sup>	Color Rendering Index <sup>2</sup>	Distribution	Voltage	Mounting
DSX0 LED		<b>Forward optics</b> P1 P5 P2 P6 P3 P7 P4	40K 4000K	90CRI	T1S Type I short T2M Type II medium T3M Type III medium T4M Type IV medium TFTM Forward throw medium	T5M Type V medium T5W Type V wide MVOLT (120V-277V) <sup>4</sup>	<b>Shipped included</b> MA Mast arm adapter (mounts on 2 3/8" OD horizontal tenon)

Control options	Finish (required)
<b>Shipped installed</b> NLTAIR2 PIRHN nLight AIR gen 2 enabled with bi-level motion / ambient sensor, 8-40' mounting height, ambient sensor enabled at 2fc. <sup>11, 12, 18, 19</sup> PIR High/low, motion/ambient sensor, 8-40' mounting height, ambient sensor enabled at 2fc. <sup>13, 18, 19</sup> PER NEMA twist-lock receptacle only (controls ordered separate) <sup>14</sup> PERS Five-pin receptacle only (controls ordered separate) <sup>14, 19</sup>	DBLXD Black

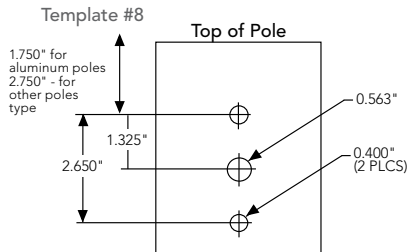
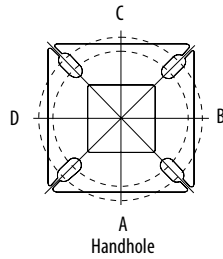


Electrical Load

	Performance Package	LED Count	Drive Current (mA)	Wattage	Current (A)					
					120V	208V	240V	277V	347V	480V
Forward Optics (Non-Rotated)	P1	20	530	34	0.28	0.16	0.14	0.12	0.10	0.07
	P2	20	700	45	0.38	0.22	0.19	0.16	0.13	0.09
	P3	20	1050	69	0.57	0.33	0.29	0.25	0.20	0.14
	P4	20	1400	94	0.78	0.45	0.39	0.34	0.27	0.19
	P5	40	700	89	0.75	0.43	0.38	0.33	0.26	0.19
	P6	40	1050	136	1.14	0.66	0.57	0.49	0.39	0.29
	P7	40	1300	170	1.42	0.82	0.71	0.62	0.49	0.36

Drilling

HANDHOLE ORIENTATION (from top of pole)



Tenon Mounting Slipfitter

Tenon O.D.	Mounting	Single Unit	2 @ 180	2 @ 90	3 @ 90	3 @ 120	4 @ 90
2-3/8"	RPA	AS3-5 190	AS3-5 280	AS3-5 290	AS3-5 390	AS3-5 320	AS3-5 490
2-7/8"	RPA	AST25-190	AST25-280	AST25-290	AST25-390	AST25-320	AST25-490
4"	RPA	AST35-190	AST35-280	AST35-290	AST35-390	AST35-320	AST35-490

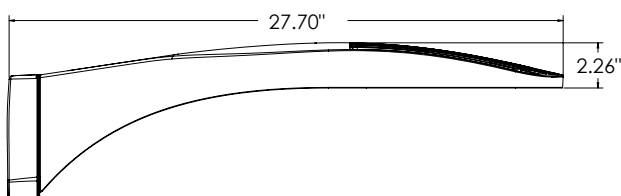
Mounting Option	Drilling Template	Single	2 @ 180	2 @ 90	3 @ 90	3 @ 120	4 @ 90
Head Location		Side B	Side B & D	Side B & C	Side B, C & D	Round Pole Only	Side A, B, C & D
Drill Nomenclature	#8	DM19AS	DM28AS	DM29AS	DM39AS	DM32AS	DM49AS
Minimum Acceptable Outside Pole Dimension							
SPA	#8	3.5"	3.5"	3.5"	3.5"		3.5"
RPA	#8	3"	3"	3"	3"	3"	3"
SPAS	#5	3"	3"	3"	3"		3"
RPA5	#5	3"	3"	3"	3"	3"	3"
SPA8N	#8	3"	3"	3"	3"		3"

DSX0 Area Luminaire - EPA

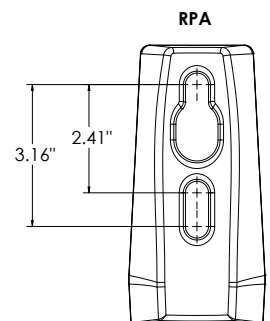
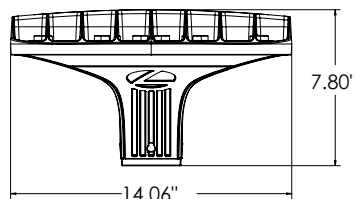
\*Includes luminaire and integral mounting arm. Other tenons, arms, brackets or other accessories are not included in this EPA data.

Fixture Quantity & Mounting Configuration	Single DM19	2 @ 180 DM28	2 @ 90 DM29	3 @ 90 DM39	3 @ 120 DM32	4 @ 90 DM49
Mounting Type						
DSX0 with SPA	0.44	0.88	0.96	1.18	---	1.16
DSX0 with SPAS, SPA8N	0.51	1.02	1.06	1.26	---	1.29
DSX0 with RPA, RPA5	0.51	1.02	1.06	1.26	1.24	1.29

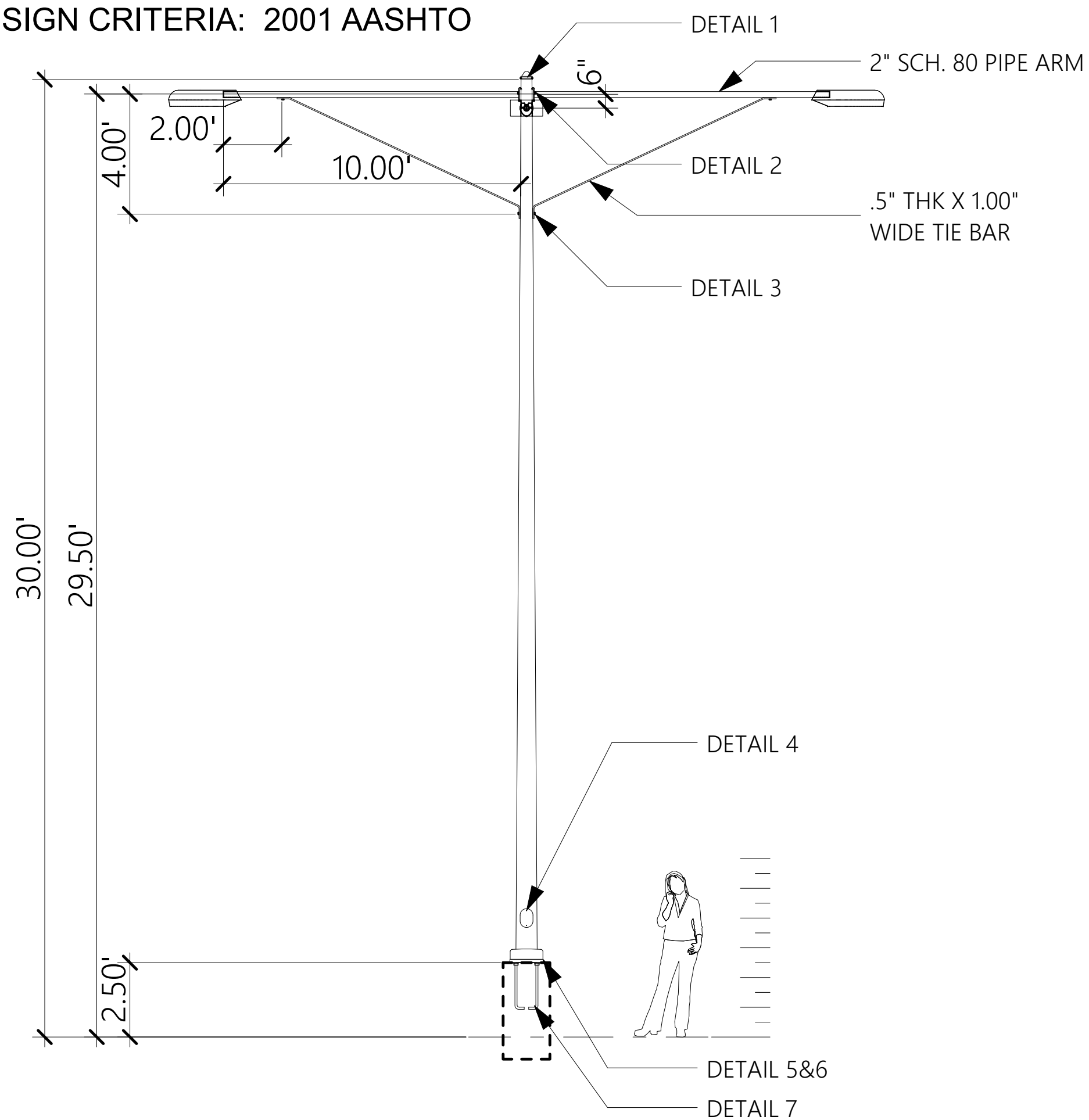
Dimensions



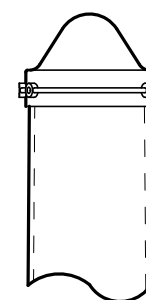
DSX0 with RPA  
Weight: 25 lbs



DESIGN CRITERIA: 2001 AASHTO

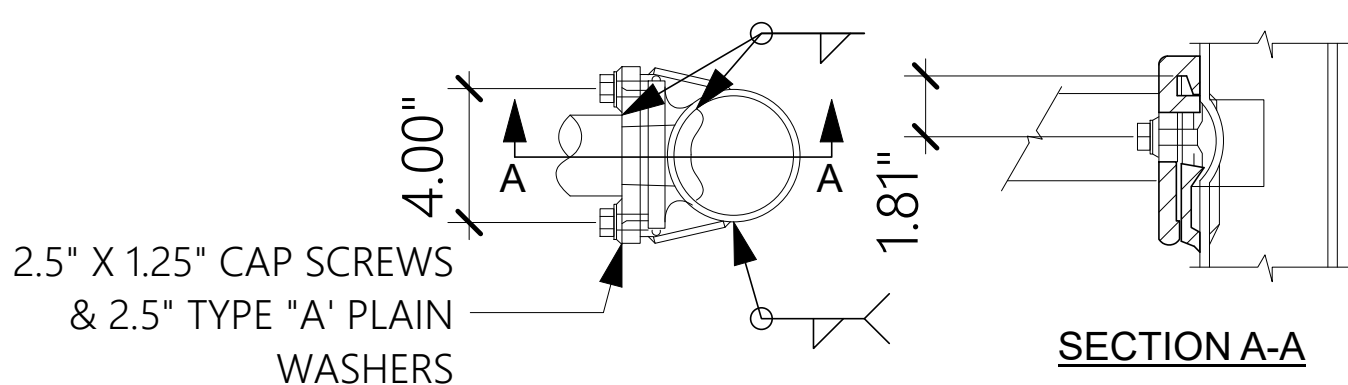


REMOVEABLE POLE CAP



DETAIL 1

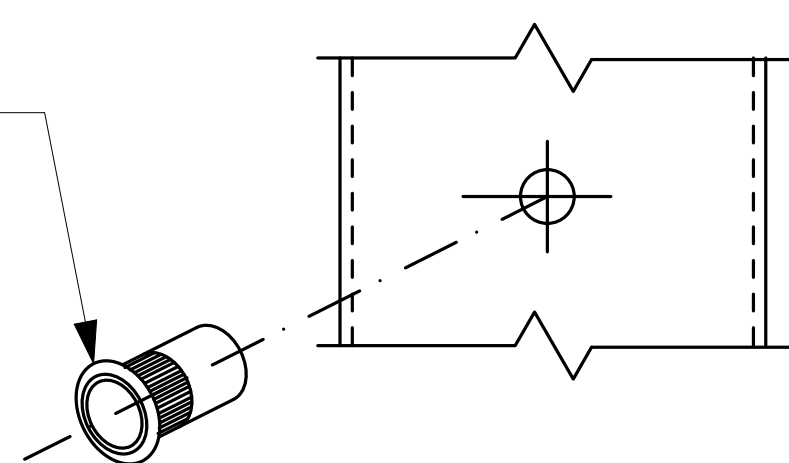
POLE CAP



DETAIL 2

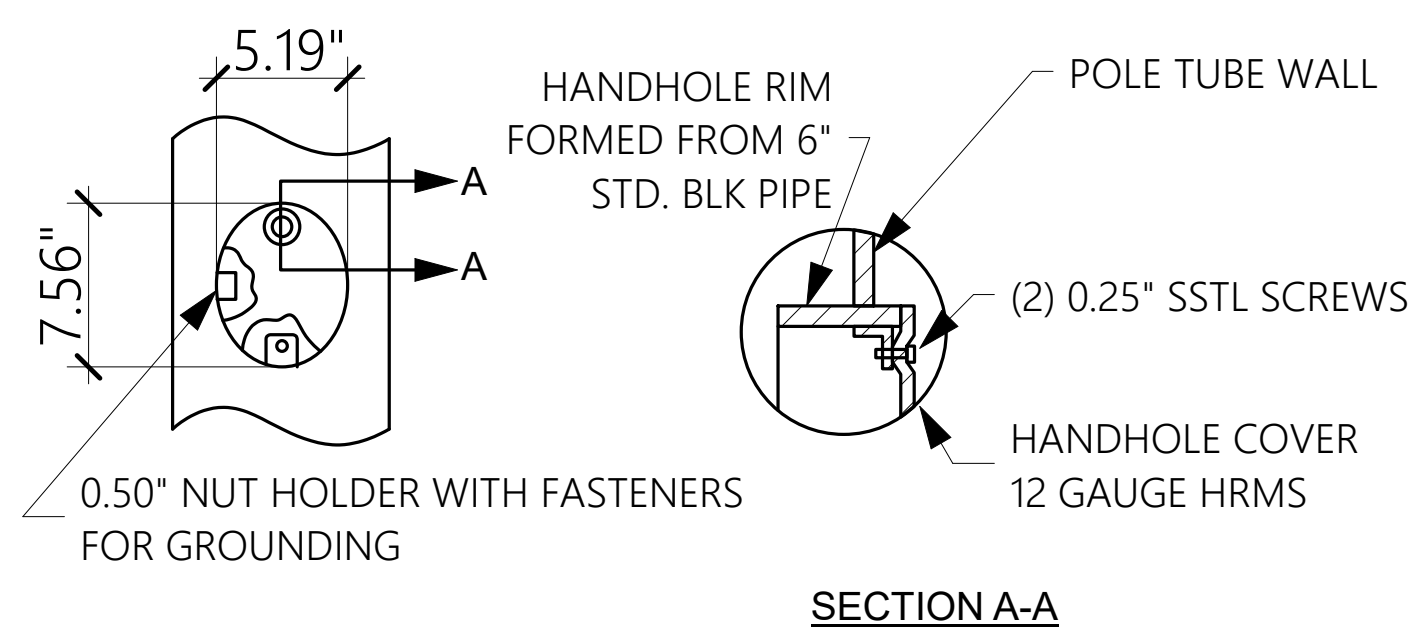
LUMINAIRE ARM ATTACHMENT

0.56" RIVNUT INSTALLED FLUSH INTO POLE AND PIPE ARM WALL. TIE BAR CONNECTED TO RIVNUTS USING 0.50" DIA BOLTS



DETAIL 3

RIVNUT DETAIL



DETAIL 4

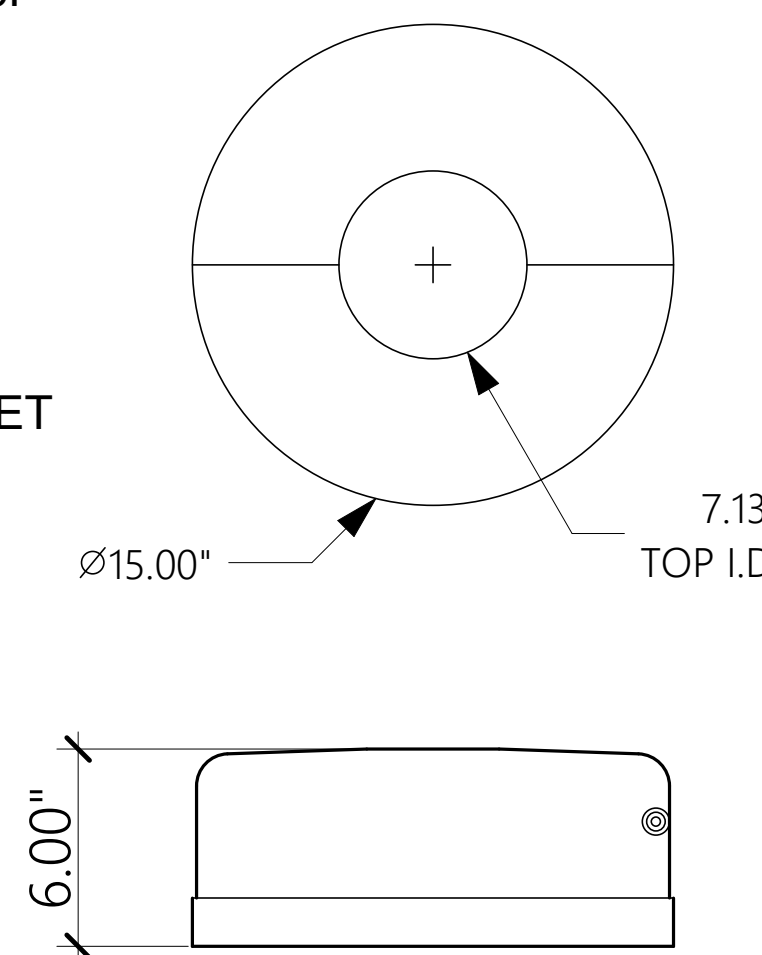
3.00" X 5.00" HANDHOLE

MATERIAL NOTE:  
ASTM: B26 ALUMINUM ALLOY  
COMPOSITION 319F OR 356F

FINISH NOTE:  
TO BE FINISH PAINTED  
TO MATCH POLE

EACH BASE IS SUPPLIED WITH (2) -0.25" STAINLESS STEEL BUTON HEAD SOCKET CAP SCREWS

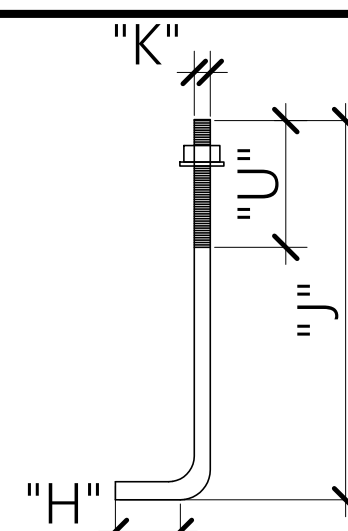
INSTALLATION NOTE:  
INSTALL COVER SUCH THAT IT FULLY MASKS ANCHOR BOLTS AND RESTS ON TOP OF FOOTING



DETAIL 6

DT15AC FULL BASE COVER

(4) ANCHOR BOLTS WITH (2) HEX NUTS AND (2) WASHERS PER BOLT WITH THREADED END GALVANIZED AT LEAST 12.00"



DETAIL 7

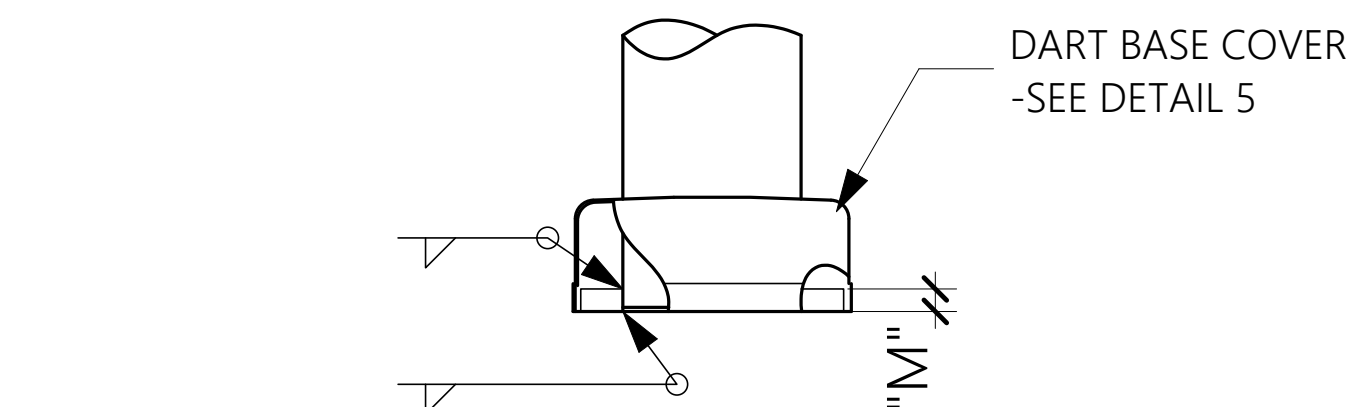
ANCHOR BOLT

MATERIAL DATA

COMPONENT	ASTM DESIGNATION	MIN YIELD (KSI)	FINISH NOTES
POLE TUBE	A595 GR.A	55	SYSTEM: FINISH PAINTED (FP) BASE COAT: NONE FINISH COAT: NONE
POLE BASE	A36	36	COLOR: TGIC OR URETHANE
ANCHOR BOLTS	F1554 GR.55	55	POLYESTER POWDER
GALVANIZING-HARDWARE	HOT DIP ZINC	--	BLACK F-264A

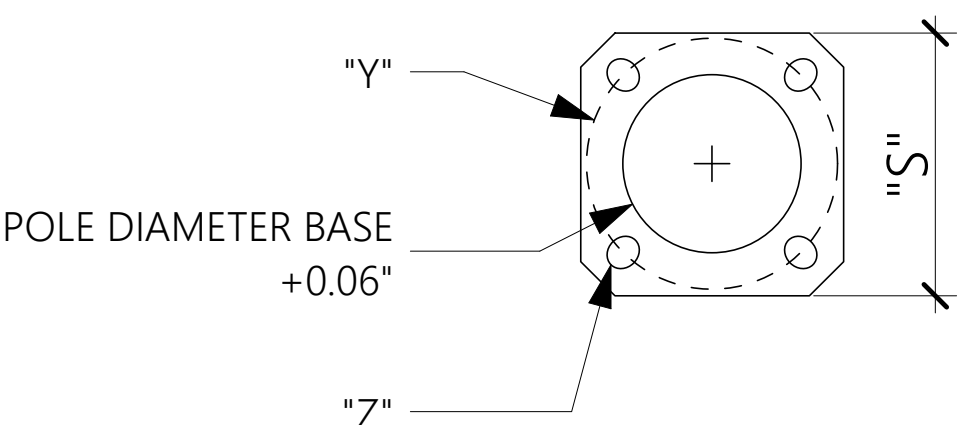
ALTHOUGH RARE, VIBRATIONS SEVERE ENOUGH TO CAUSE DAMAGE CAN OCCASIONALLY OCCUR IN STRUCTURES OF ALL TYPES. BECAUSE THEY ARE INFLUENCED BY MANY INTERACTING VARIABLES, VIBRATIONS ARE GENERALLY UNPREDICTABLE. THE USER'S MAINTENANCE PROGRAM SHOULD INCLUDE OBSERVATION FOR EXCESSIVE VIBRATION AND EXAMINATION FOR ANY STRUCTURAL DAMAGE OR BOLT LOOSENING. THE VALMONT WARRANTY SPECIFICALLY EXCLUDES FATIGUE, FAILURE, OR SIMILAR PHENOMENA RESULTING FROM INDUCED VIBRATION, HARMONIC OSCILLATION, OR RESONANCE ASSOCIATED WITH MOVEMENT OF AIR CURRENTS AROUND THE PRODUCT

VIBRATION DISCLAIMER



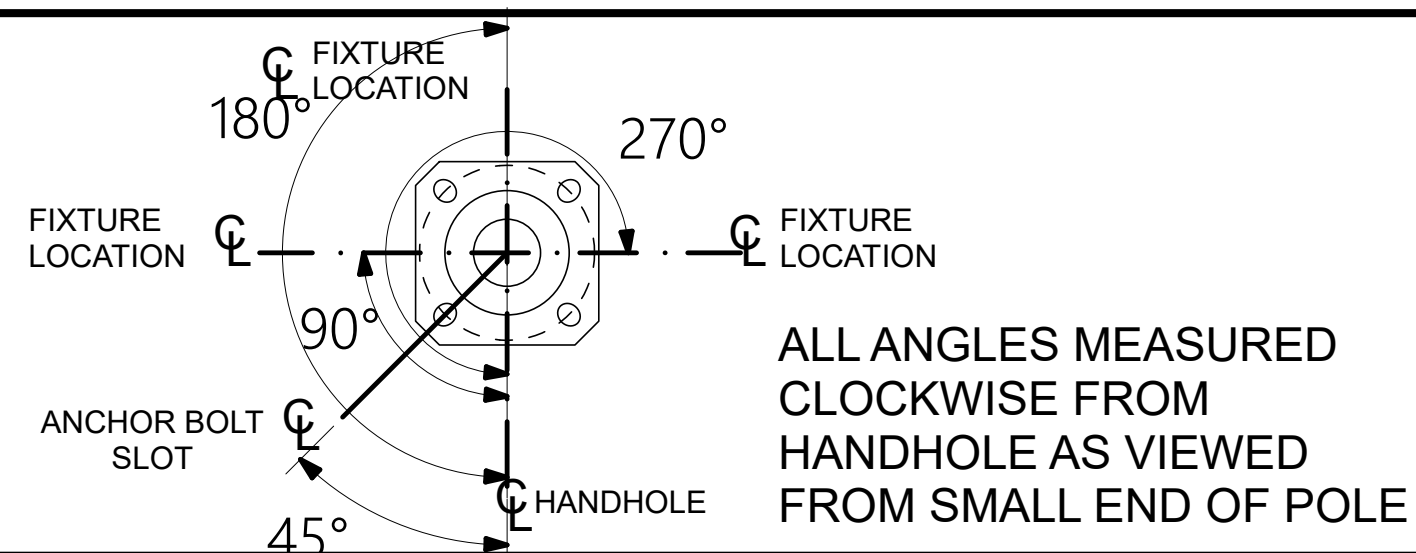
DETAIL 5

POLE BASE

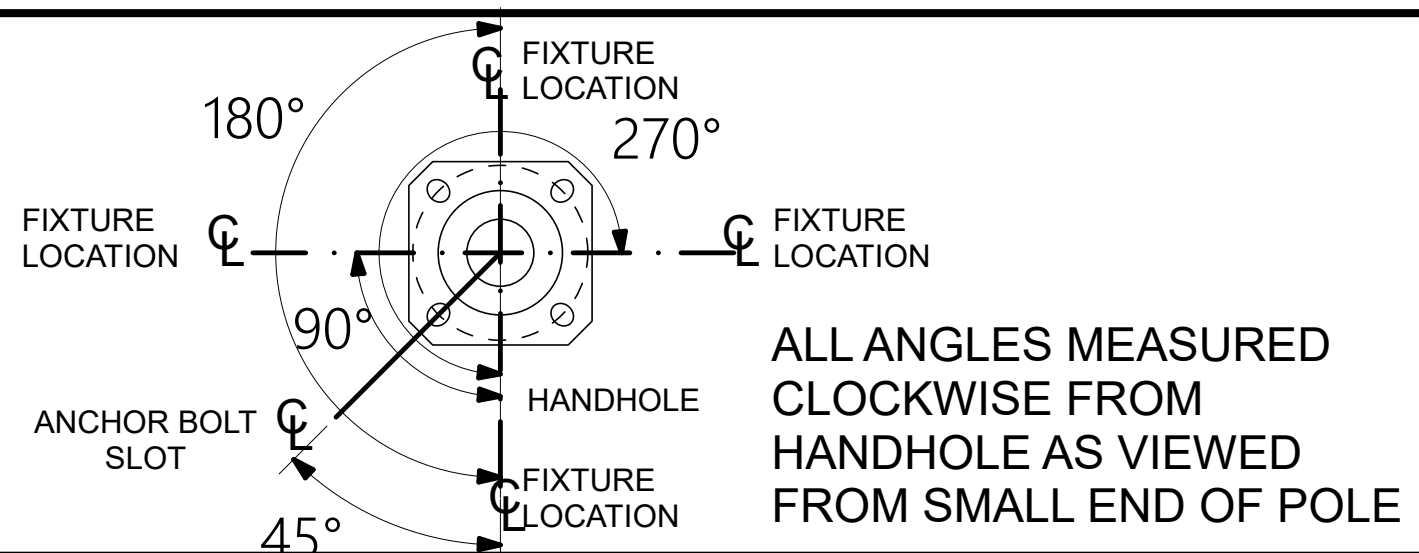


POLE DATA

ITEM	TYPE	QTY.	NOTES:	POLE TUBE				POLE BASE				ANCHOR BOLT				LUMINAIRE ARM	
				BASE DIA. (IN)	TOP DIA. (IN)	LENGTH (FT)	GAUGE OR THK. (IN)	SQUARE "S" (IN)	BOLT CIRCLE "Y" (IN)	THK. "M" (IN)	SLOT "Z" (IN)	DIA. "K" (IN)	LENGTH "J" (IN)	HOOK "H" (IN)	THREAD LENGTH "U" (IN)	SPAN (FT)	QTY
5				8.60	4.40	27.50	7	12.50	12.00	1.25	1.38 X 1.94	1.25	42.00	6.00	6.00	10.00	3 ARMS
6				8.60	4.40	27.50	7	12.50	12.00	1.25	1.38 X 1.94	1.25	42.00	6.00	6.00	10.00	4 ARMS



RADIAL INDEX D3 / THREE FIXTURE HEADS



RADIAL INDEX D4 / FOUR FIXTURE HEADS

U OF H LARGE PARKING LOT STANDARD 27.5 FT. POLE ON 30" BASE (30' TOTAL HT.)

LIGHTING STRUCTURES

VALMONT INDUSTRIES, INC. RESERVES THE RIGHT TO INSTALL VARIOUS, ENGINEER APPROVED, MATERIAL HANGING ACCOMMODATIONS TO FACILITATE THE MANUFACTURING PROCESS



PAGE NO: 1

DRAWING NUMBER: REV: