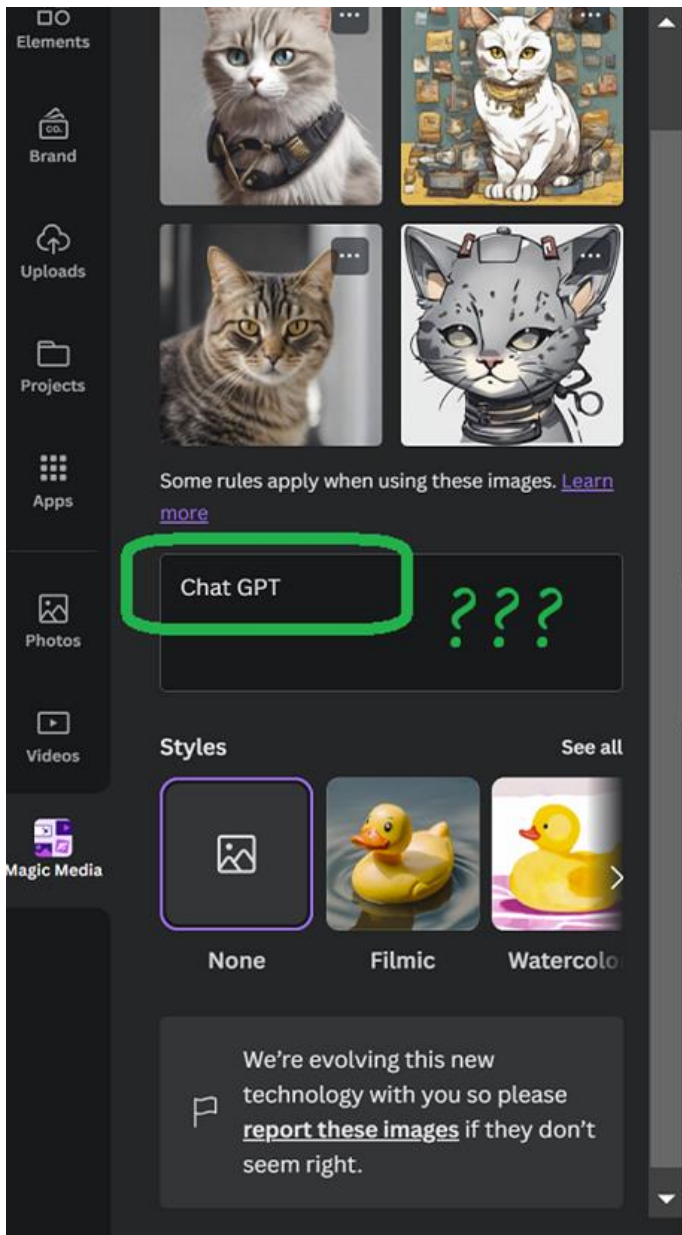


Learners

Chat GPT & Gen AI Tools to Support English Learners

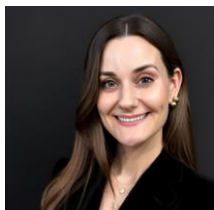


Aniko N. Fields fieldsan@laccd.edu
Sarah D. Schmitz sdschmit@uh.edu
Emese Felvégi efelvegi@uh.edu



Speaker Background and Topic Overview

Sarah Schmitz



Instructional Designer
C.T. Bauer College of
Business

K-12 & ELLs

Aniko N. Fields



Faculty
Los Angeles
City College

College English & ELLs

Emese Felvégi



Dir. of Digital Learning
C.T. Bauer College of
Business

Business English & ELLs

Project Goal

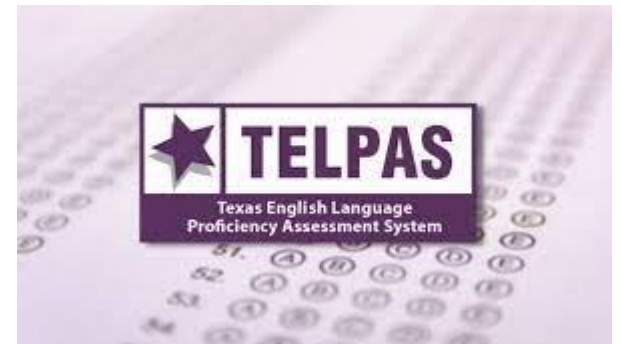
Observe policies for ELL support, collect uses of AI tools for:

- + English language skill development,
- + Critical thinking skill development,
- + Information & disciplinary literacy development.

with a focus on non-native English speakers/English learners.

K-12 & ELLs in the State of Texas

- Texas Education Agency (TEA) policies and standards
- Texas English Language Proficiency Assessment System (TELPAS)
- Language Proficiency Assessment Committees (LPACs)
- Variety of ELL adaptive instructional strategies (SI) and teacher training supported

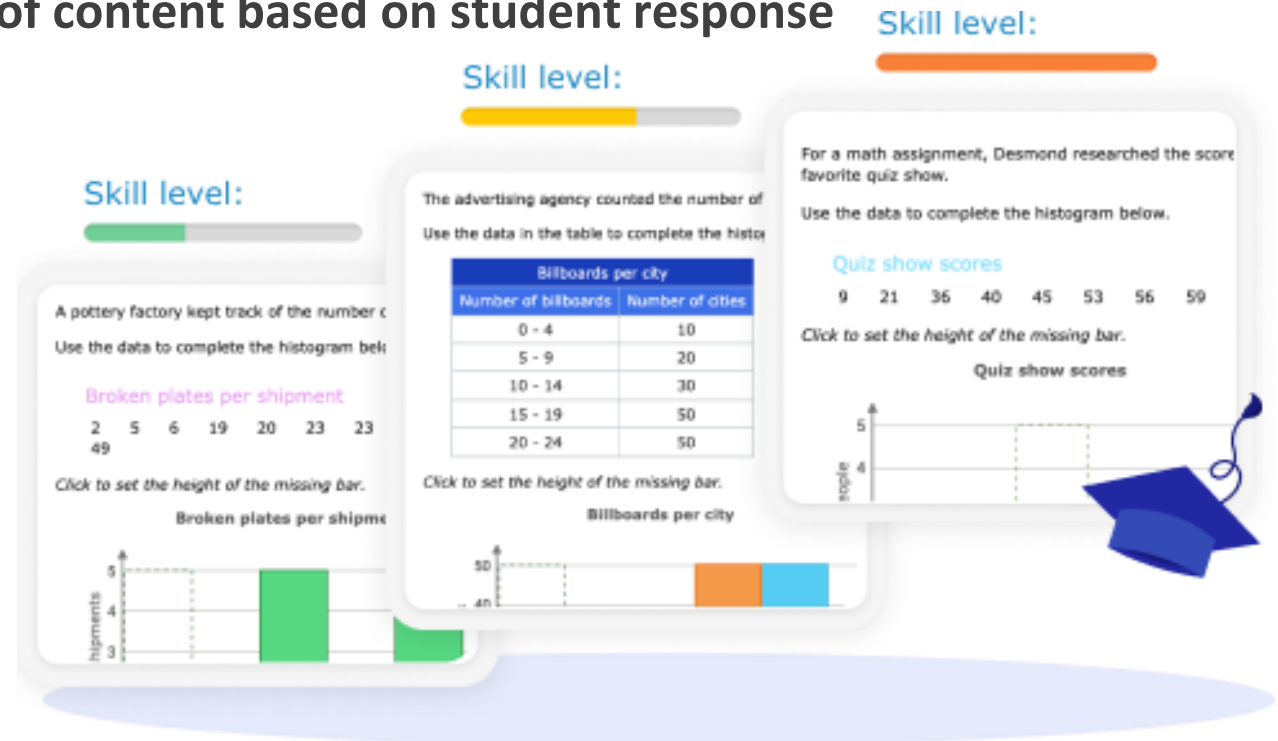


ELL support abruptly stops after high school graduation.

How is AI used in K-12 Education?

- **Adaptive Learning Platforms for Content Mastery**
 - IXL, DreamBox, Carnegie Math, Knewton Alta, Vocabulary.com, and many more!
 - AI algorithms adjust difficulty level of content based on student response
 - HB 4545 Compliance

- Automated Grading & Feedback
 - TurnItIn, GradeScope, EssayTagger
- Homework Assistance and Tutoring
 - Photomath, Symbolab
- Content creation for teachers!
- Accessibility & Inclusion
 - Google Speech-to-Text API
 - text-to-speech conversion: Speechify



The Need for ELL Support in Higher Ed

- Nationwide: low levels of reading and writing skills within high school graduates
- California: AB 705 & AB 1705 - community college students are directly placed in credit/transfer level classes regardless of language learning status
- Only a few remedial classes remain
- Completion rate for ELLs in ESL classes (2 below transfer level) in 2016-2017: 9%, in 2021-2022: 16%
- Overall completion rates rose from 52% to 66% from 2016-2017 to 2021-2022 (even with the effects of COVID-19)
- Support for ELLs provided in the form of 'writing labs' and tutoring

Avenues for ELL Support with AI in College English Courses

- ChatGPT: available since end of 2022, 3.5 for free, 4.0 currently \$20 monthly
- AI checkers available within a couple of months but unreliable and biased against ELLs
- Biggest worry: academic dishonesty - those who want to cheat will find a way
- ELLs can benefit from generative AI:
 - grammar corrections
 - vocabulary enhancement
 - sentence structure guidance
 - pre-writing brainstorming
 - real-world writing simulations
 - instant translation support - both to native language and English to English (simplified - Spenser's The Faerie Queene!)

Avenues for AI Inclusion and ELL Support in a Core Business Apps Course

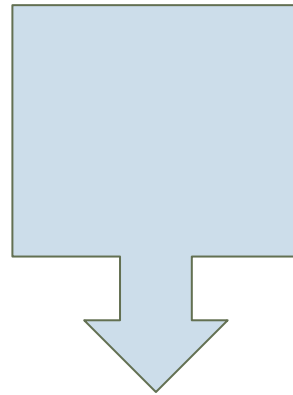
AI in the Workplace

60% of U.S. adults are familiar with Chat GPT (PEW)

10-20% of adults use Chat GPT @ work (Statista/PEW)

5% input confidential/sensitive information (Statista)

- + NACE Career-readiness standards
- + Disciplinary literary
- + Communication skill development
- + Ethics, legal compliance



Opportunities for Education



Canva AI generated image for a “digital divide” prompt.

AI Use Ideas & Samples for a BCIS Course Integrated COIL Project

AI in Action for COIL Support

Known COIL barriers:

- Time Zones
- Language
- Experiences
- Context
- Technology

Tools Used & Public Outputs:

- Chat GPT (Free & Paid)
- Bard (Free)
- Slidespeak (\$15)
- Canva AI Illustrations (\$15)

- Teach writing, editing, fine-tuning prompts
- Writing samples for style, genre, tone
- Models for length, complexity, format
- Summarize core readings about a topic
- Check validity of content, structure, language
- Evaluate resources, references used

Describe barriers to closing the digital divide around the world

Monthly subscription fees and the initial cost of purchasing devices can be prohibitive.

- Reference: Anderson, M., & Kumar, M. (2019). Digital Divide Persists Even



Felvegi, Emese



Oops! That page cannot be found

(Verse
Wi-Fi w



Select o

- 0 EN - Canva - Handbook Cover
- 0 HU - Canva - Handbook Cover
- 1 EN - Chat GPT 35 - Digital Divide - Key Terms
- 1 EN - Gemini - Digital Divide - Key Terms
- 1 HU - ChatGPT 35 - Digitalis Szakadek - Szokincs
- 1 HU - Gemini - Digitalis Szakadek - Szokincs
- 2 EN - Chat GPT 35 - Digital Divide - Middle School Textbook Chapter - 2-11-2024
- 2 EN - Gemini - Digital Divide - HS Textbook Chapter
- 2 EN - Gemini - Digital Divide - Middle School Textbook Chapter - 2-11-2024
- 2 HU - Gemini - Digitalis szakadek - HS Tankonyvi fejezet
- 3 EN - Actual Economist Article - VISA Sponsored
- 3 EN - Chat GPT 35 - Digital Divide - Economist Style Article
- 3 EN - Gemini - Digital Divide - Economist Style - Slidespeak Slides v1
- 3 EN - Gemini - Digital Divide - Economist Style - Slidespeak Slides v2
- 3 EN - Gemini - Digital Divide - Economist Style - Slidespeak Slides v3
- 3 EN - Gemini - Digital Divide - Economist Style - Slidespeak Slides v4
- 3 EN - Gemini - Digital Divide - Economist Style Article - Draft 1
- 3 EN - Gemini - Digital Divide - Economist Style Article - Draft 2
- 3 EN - Gemini - Digital Divide - Economist Style Article - Draft 3
- 3 HU - Gemini - Digitalis szakadek - HVG cikk
- 4 EN - Gemini - Strategy - Concept Map
- 4 HU - Gemini - Strategia - Elmeterkep
- 5A EN - Chat GPT 35 - Digital Divide - Taylor Swift Song - 2-11-2024
- 5B EN - Gemini - Digital Divide - Song Lyrics
- 5B EN - Gemini - Digital Divide - Taylor Swift Song - 2-3-2024
- 5B HU - Gemini - Digitalis szakadek - Magyar dalszovegek
- 5X - Chat GPT 35 - Digital Divide - Fortnite Style Video Game - 2-11-2024
- 5X - Gemini - Digital Divide - Fortnite Style Video Game 2-11-2024
- 5X - Gemini - Digital Divide - TV Shows
- 5X - Gemini - Digital Divide - Video Games
- 6 EN - Chat GPT 4 - Divide North America - DL from Hungary 2-2-2024
- 6 EN - Chat GPT 4 - Updated Prompts for Asia from Hungary
- 6 EN - Chat GPT 35 - Divide North America - 2-11-2024 - Annotated
- 6 EN - Chat GPT 35 - Divide North America - 2-11-2024
- 6 EN - Gemini - Divide North America - 2-11-2024 - Draft 1
- 6 EN - Gemini - Divide North America - 2-11-2024 - Draft 2
- 6 EN - Gemini - Divide North America - 2-11-2024 - Draft 3
- Bard-Digital-Divide-2-4-2024
- Illustration - For Gemini - Taylor Prompt
- Illustration Canva AI - Digital Divide
- Paywall Issues - Gemini - Cant Reference Itself
- Readability_Gemini_Divide_Textbook_A
- Readability_Gemini_Divide_Textbook_B
- Readability_Gemini_Divide_Textbook_C
- Real Article - WSJ - 11-16-2023
- Reference - Gemini - Divide_Notice_A
- Reference - Gemini - Divide_Notice_B
- Reference - Gemini - Divide_Notice_C
- SlideSpeak - Gemini Text Turned Slide
- Supplement - Chat GPT 4 - Prompt Set 1 from Hungary
- Supplement - Gemini - Digitalis Divide - Economist Article - Dumb It Down Dot AI Version

Ac

Recommendations

Proceed with caution! :]

Explore integration options based on:

- Your experiences w AI
- Student experiences w AI
- Local community of practice AI use
- Research & practicum use
- Publisher tools
- Workforce integrations

Evaluate and discuss tools with your students to grow with your experiences and understand their limitations.

Questions, Comments?

References

Yee, K.; Whittington, K.; Doggette, E.; and Uttich, L., "ChatGPT Assignments to Use in Your Classroom Today" (2023). *UCF Created OER Works*. 8. <https://stars.library.ucf.edu/oer/8>

Liang, W., Mert Yuksekogul, Mao, Y., Wu, E., & Zou, J. (2023). *GPT detectors are biased against non-native English writers*. 100779–100779. <https://doi.org/10.1016/j.patter.2023.100779>

Transfer-Level English and Math Completion Dashboard | California Community Colleges Chancellor's Office. (n.d.). [Www.cccco.edu](http://www.cccco.edu).

<https://www.cccco.edu/About-Us/Chancellors-Office/Divisions/Educational-Services-and-Support/transfer-level-dashboard>