

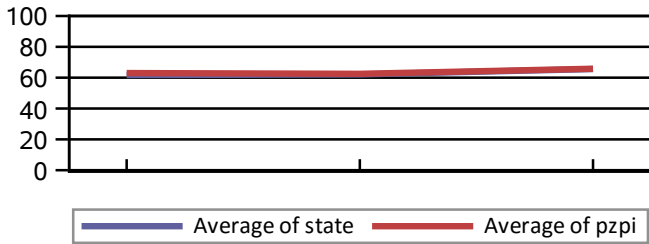
# Student Academic Performance in the Proximal Zone of Professional Impact

## STAAR Performance<sup>1</sup> Summary

### High Schools

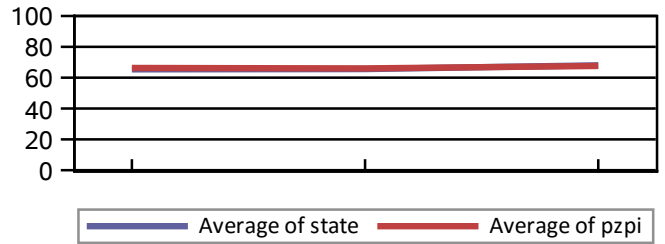
#### University of Houston

### English I



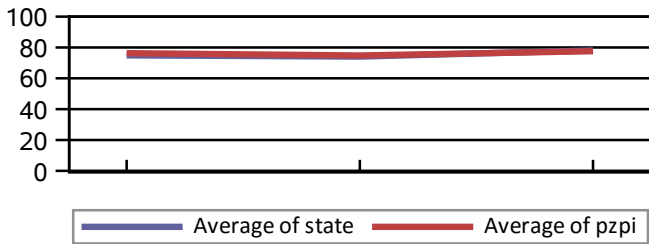
	2014	2015	2016
PZPI	63.0	62.5	65.8
State	61.7	62.1	65.6

### English II



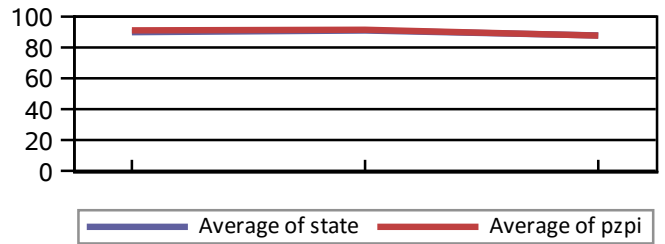
	2014	2015	2016
PZPI	66.3	66.0	67.6
State	65.4	65.6	68.0

### Algebra I



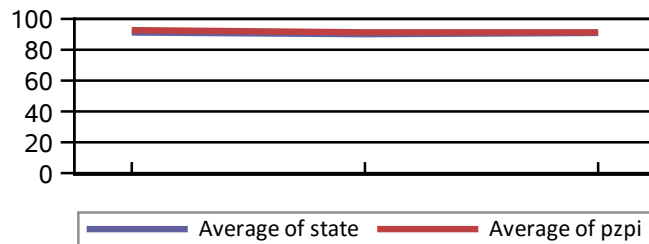
	2014	2015	2016
PZPI	76.3	74.8	77.6
State	74.9	74.1	78.1

### Biology



	2014	2015	2016
PZPI	91.1	91.5	87.7
State	89.9	91.0	87.8

### US History



	2014	2015	2016
PZPI	92.7	91.3	91.3
State	91.2	90.1	90.9

<sup>1</sup>Cut scores used to determine the performance standard for STAAR percent passing at satisfactory level or above increase each year.

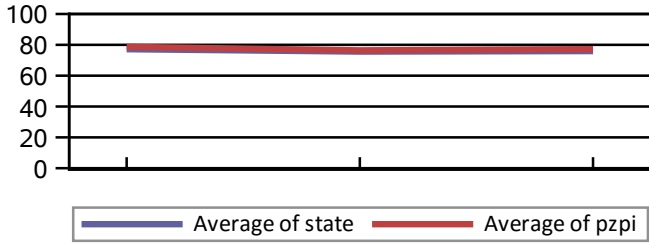
# Student Academic Performance in the Proximal Zone of Professional Impact

## STAAR Performance<sup>1</sup> Summary

### Middle Schools

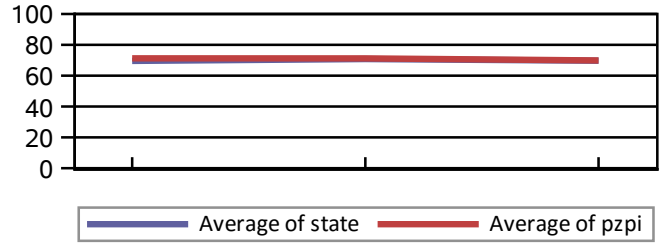
#### University of Houston

### Reading



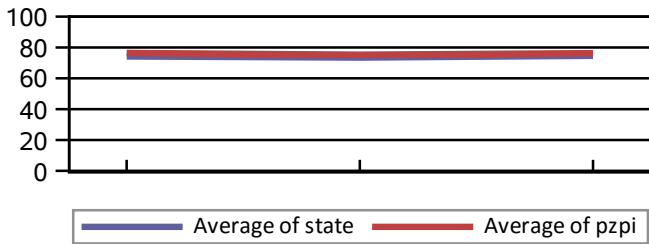
	2014	2015	2016
PZPI	78.7	76.4	77.2
State	77.2	75.6	76.0

### Writing



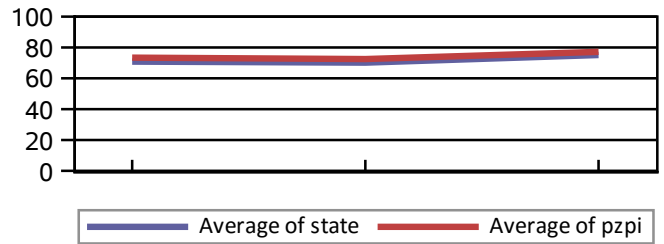
	2014	2015	2016
PZPI	71.3	71.2	69.9
State	69.6	70.8	69.7

### Mathematics



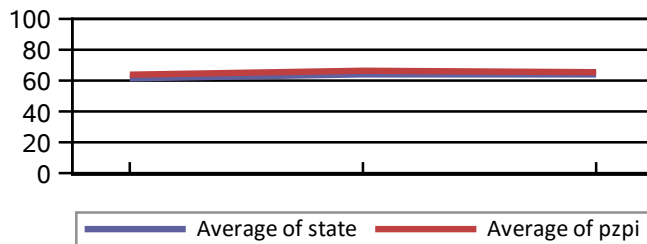
	2014	2015	2016
PZPI	76.5	75.4	76.3
State	74.2	73.4	74.6

### Science



	2014	2015	2016
PZPI	73.4	72.5	77.2
State	70.8	70.2	75.1

### Social Studies



	2014	2015	2016
PZPI	63.8	66.4	65.4
State	61.5	64.0	64.0

<sup>1</sup>STAAR percent passing at satisfactory level or above aggregated by subject and grade for campuses designated by the state as middle level. Cut scores used to determine the satisfactory or above performance standard increase each year.

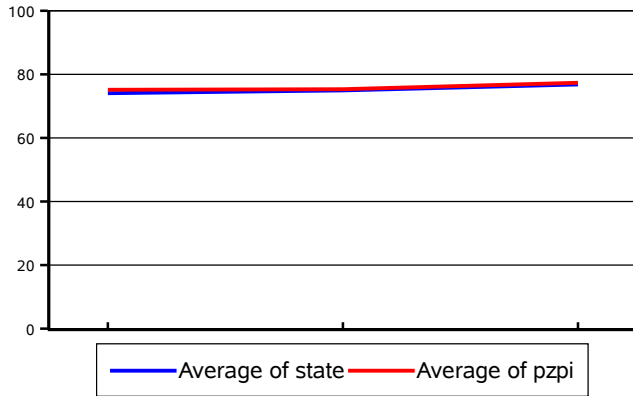
# Student Academic Performance in the Proximal Zone of Professional Impact

## STAAR Performance<sup>1</sup> Summary

### Elementary Schools

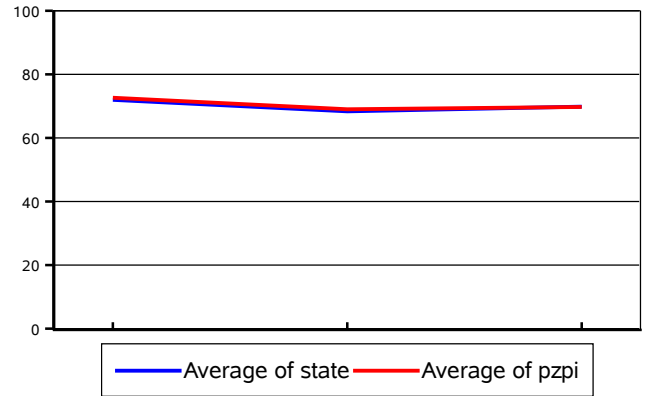
#### University of Houston

### Reading



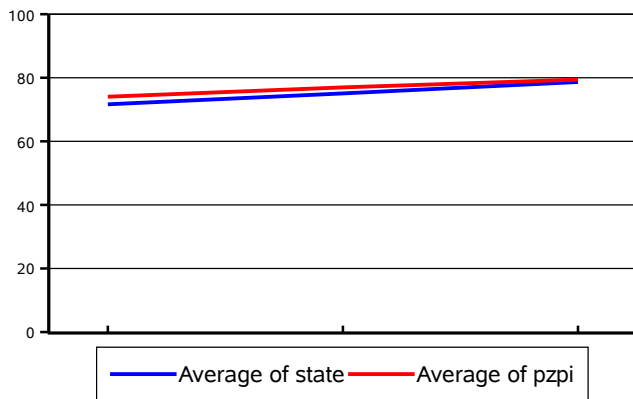
	2014	2015	2016
PZPI	75.1	75.3	77.4
State	74.1	74.9	76.8

### Writing



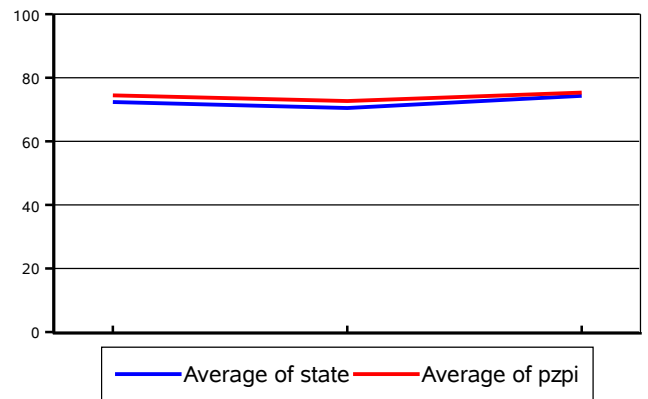
	2014	2015	2016
PZPI	72.6	69.0	69.7
State	72.0	68.4	69.8

### Mathematics



	2014	2015	2016
PZPI	74.0	77.0	79.4
State	71.6	75.1	78.7

### Science



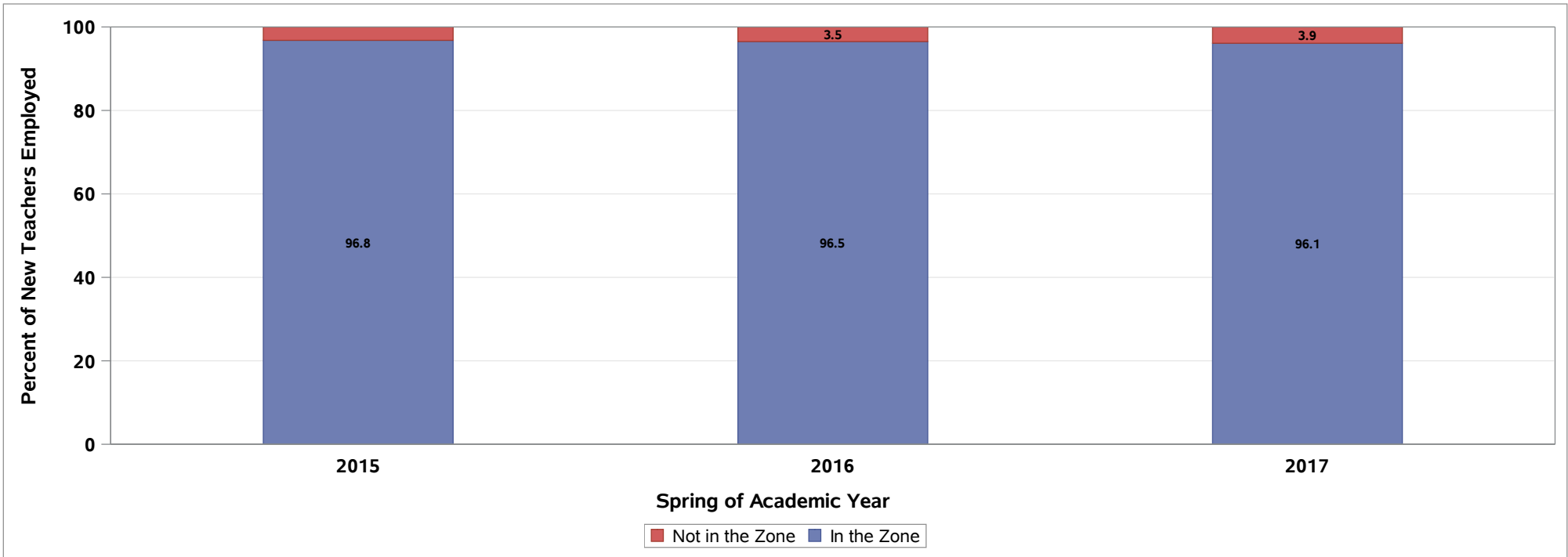
	2014	2015	2016
PZPI	74.5	72.7	75.3
State	72.4	70.5	74.3

<sup>1</sup>STAAR percent passing at satisfactory level or above aggregated by subject and grade for campuses designated by the state as elementary. Cut scores used to determine the satisfactory or above performance standard increase each year.

# Percentage of Newly-Certified Teachers Employed Inside and Outside the Proximal Zone of Professional Impact

2015 - 2017

University of Houston



	New Teachers Employed						% Change 2015 to 2017
	2015		2016		2017		
	Number	Percent	Number	Percent	Number	Percent	
<b>In the Zone</b>	332	96.8	274	96.5	295	96.1	-0.7
<b>Not in the Zone</b>	11	3.2	10	3.5	12	3.9	0.7
<b>Total</b>	<b>343</b>	<b>100.0</b>	<b>284</b>	<b>100.0</b>	<b>307</b>	<b>100.0</b>	<b>0.0</b>