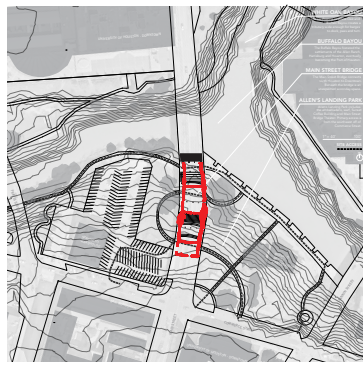


STUDIO SPOTLIGHT

ARCH 6603



Students in ARCH 6603:

Alicia Lopez
Andy Rowell
Blanca Soto
Chandler Johnson
Jimmy Martinez
Davilla Lima
Masha Cohn
Parimala Venkatesh
Pooja Shetty
Shaheen Maredia
Stephen Dahmann
Tuesdie Alonso



Graduate students in ARCH 6603 were tasked with developing underutilized areas of Houston with the potential to activate them into new urban spaces. The aim was to explore contemporary issues of identity, communication and autonomy, through the temporary appropriation of public space, whether spatial, temporal, or psychological.

Chandler Johnson and Tuesdie Alonso chose the area beneath Main Stream Bridge at Allen Landings Park.

The theme of the studio was “Projected City”, Could you define the scope of the assignment?

An architectural projection is a site specific constructed adaptation to a space which considers the needs of the place and affects human-centric interaction.

How did you go about picking your locations in Houston?

We walked along the Buffalo Bayou Trail and found that the most interesting aspect of the trail was when we walked under the bridges. For our purposes Main Street Bridge was chosen because it seemed to have a theater-like appearance. We felt this space had potential to become a unique place. The goal became to take the potential of the space and transform it into a place with an architectural intervention that would attract people to visit this new space.

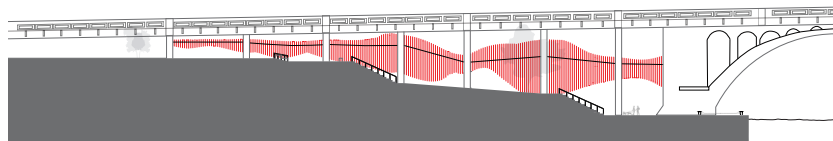
continued...

What did this design challenge teach you about opportunities to revitalize unexpected spaces?

This project taught us to look at the city and acknowledge the forgotten, in between spaces that could potentially become inhabited with any type of intervention. We should take these spaces as opportunities to redesign these secondary spaces and integrate them into society.

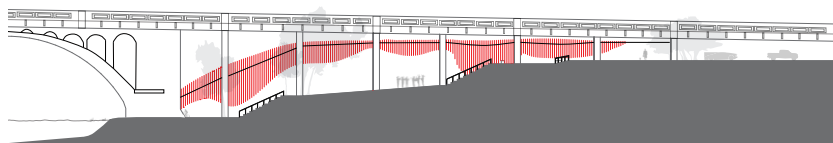
What part of your design education do you feel you used most during this semester?

Our group explored digital fabrication to design our project. For our final model, we used the Keeland Design Center to cut some pieces and went off campus to CNC route our project in order to construct our twelve foot long bar-bench design.



EAST FORM

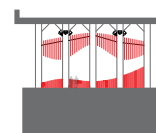
Visible from the University of Houston Downtown, the East Elevation gestures upward to the Meet and Eat space which serves students with a shady place to eat breakfast, lunch, and social spot to meet up with friends. To the north, the form creates a low-slung arch above the Buffalo Bayou Bike Trail, both signifying a place to enter, and mirroring the West Elevation, resulting in a tunnel-like effect.



WEST FORM

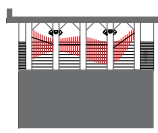
Responding to the Buffalo Bayou Bike Trail, the western elevation reaches downward to the north, creating an archway which signifies a place to enter. At the center the form appears to be bound upward, revealing a stage for public performances, taking advantage of Allen's Landing and Buffalo Bayou as the backdrop. A "tunnel" in the form separates the performance space from the Meet and Eat space toward the south.

ELEVATIONS



THEATER NORTH

The northern theater partition serves as the stage left setpiece, providing a visual boundary between performance space and non performance space. The form's curvature is intended to guide the viewers eye down and inward.



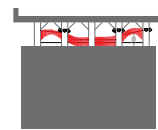
THEATER SOUTH

The southern theater partitions serve in two capacities. Similar to the theater north form, the upper portion of the theater south form is a setpiece intended to guide the viewers eye toward the performance. Also, the lower portion of the theater south form responds to an existing park trail, providing a place to sit and watch performances.



SEATING

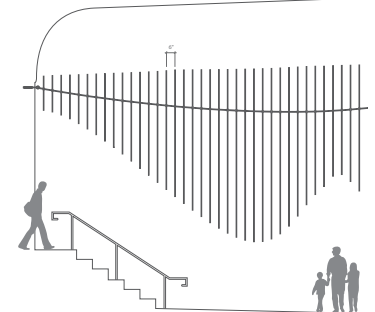
Providing a place to sit, eat, and relax is essential to the Hyper Form concept. At a fundamental level, public furniture identifies the area as a place to stop and congregate. The seating is purposefully situated next to the bar.



BAR

The Hyper Form bar functions as a public food counter where vendors can sell meals to students from UH and workers downtown. In this way, commerce can activate a currently unused space-making the bar crucial in the project's success.

STRUCTURAL CONCEPT



INTERIOR ELEVATIONS

