

**UNIVERSITY OF HOUSTON  
Campus Facilities Planning Committee  
Agenda Item Description Form**

- 1. DATE:** April 13, 2018
- 2. ITEM:** Public Art Collection Enhancements (PACE)
- 3. REQUESTING DEPARTMENT:** Curator of the University Art Collection
- 4. CONTACT NAMES & PHONE NUMBERS:** Michael Guidry 713-743-5315  
David MacLeod 713-743-5521
- 5. PRESENTER: Ed Mader** Patrick Peters
- 6. RECOMMENDATION/  
ACTION REQUESTED:** Approval

**SUMMARY:**

The project consist of making repairs and site enhancements to existing campus art installations on campus.

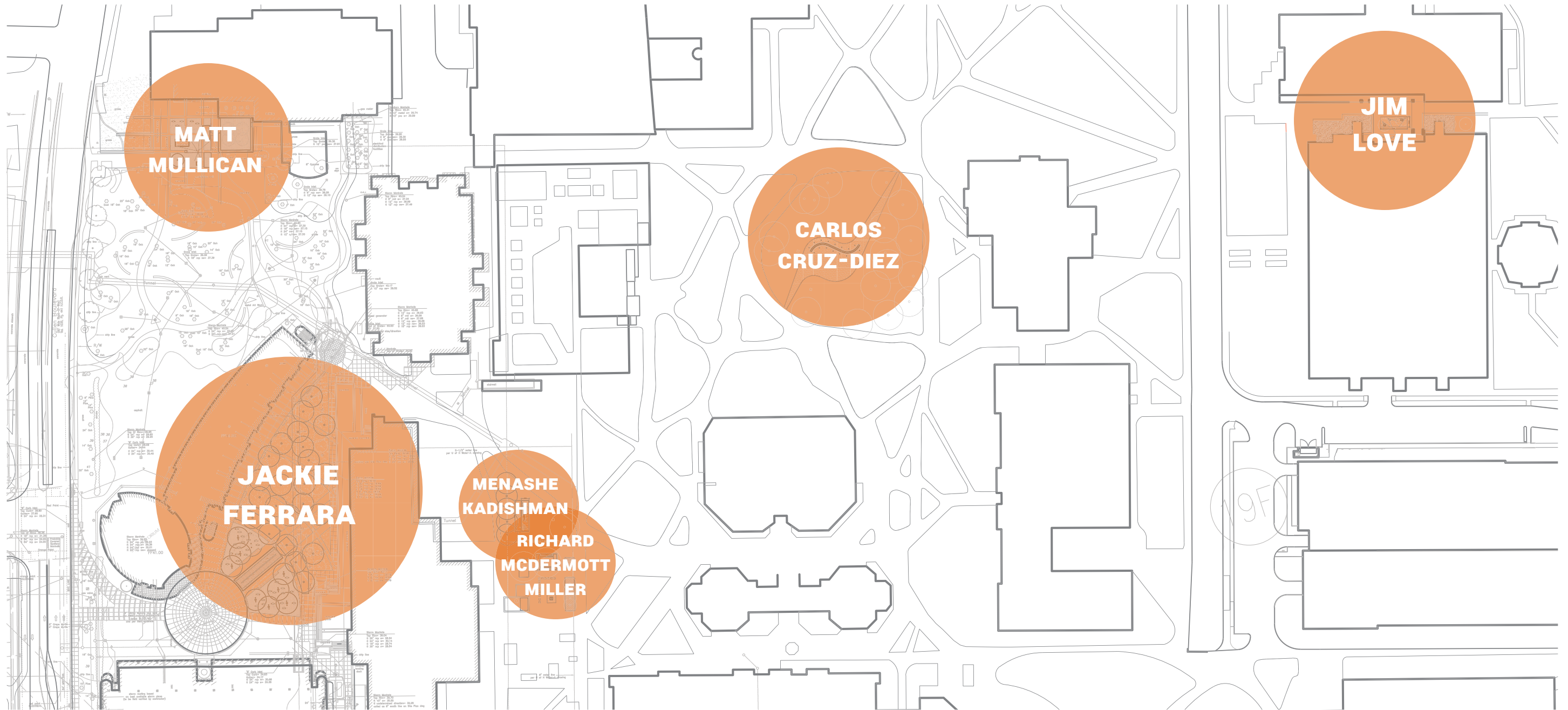
- 7. PROPOSED START DATE:** June 2018
- 8. SUPPORTING DOCUMENTATION:** PowerPoint Presentation

**UNIVERSITY OF HOUSTON**  
PUBLIC ART COLLECTION ENHANCEMENTS

08.25.2017 - SCHEMATIC DESIGN APPROVAL

aSakura  
robinSon

# PUBLIC ART COLLECTION ENHANCEMENTS



# PUBLIC ART COLLECTION STANDARDS

## MATERIALS & FINISHES



## OUTDOOR FURNITURE



## LIGHTING FAMILY



**HP2 Series™**  
Now available in 12W-31W  
Featuring Heat pipe Technology!  
Shown in Clear Anodized Powder (CAP)

MULLICAN

FERRARA

KADISHMAN

MILLER

LOVE

CRUZ-DIEZ

**SCHEMATIC DESIGN OPTIONS**

# MATT MULLICAN

PLACEMAKING



- 1 Existing Tree
- 2 Cedar Elm Tree
- 3 PACS Gravel
- 4 PACS Edge Treatment
- 5 UH Standard Benches
- 6 Decomposed Granite
- 7 Specialty Light Pole

MATT MULLICAN

BEFORE



AFTER



UNIVERSITY OF HOUSTON  
PUBLIC ART COLLECTION ENHANCEMENTS

aSakura  
robinSon

# JACKIE FERRARA

PLACEMAKING



- 1 Tree Groupings
- 2 Future Bistro Tables + Chairs
- 3 Replace Sod
- 4 Decomposed Granite
- 5 Shrubs + Groundcover
- 6 Powerwash Existing Hardscape
- 7 UH Standard Bench



JACKIE FERRARA

BEFORE



AFTER



UNIVERSITY OF HOUSTON  
PUBLIC ART COLLECTION ENHANCEMENTS

aSakura  
robinson

JACKIE FERRARA

BEFORE



AFTER

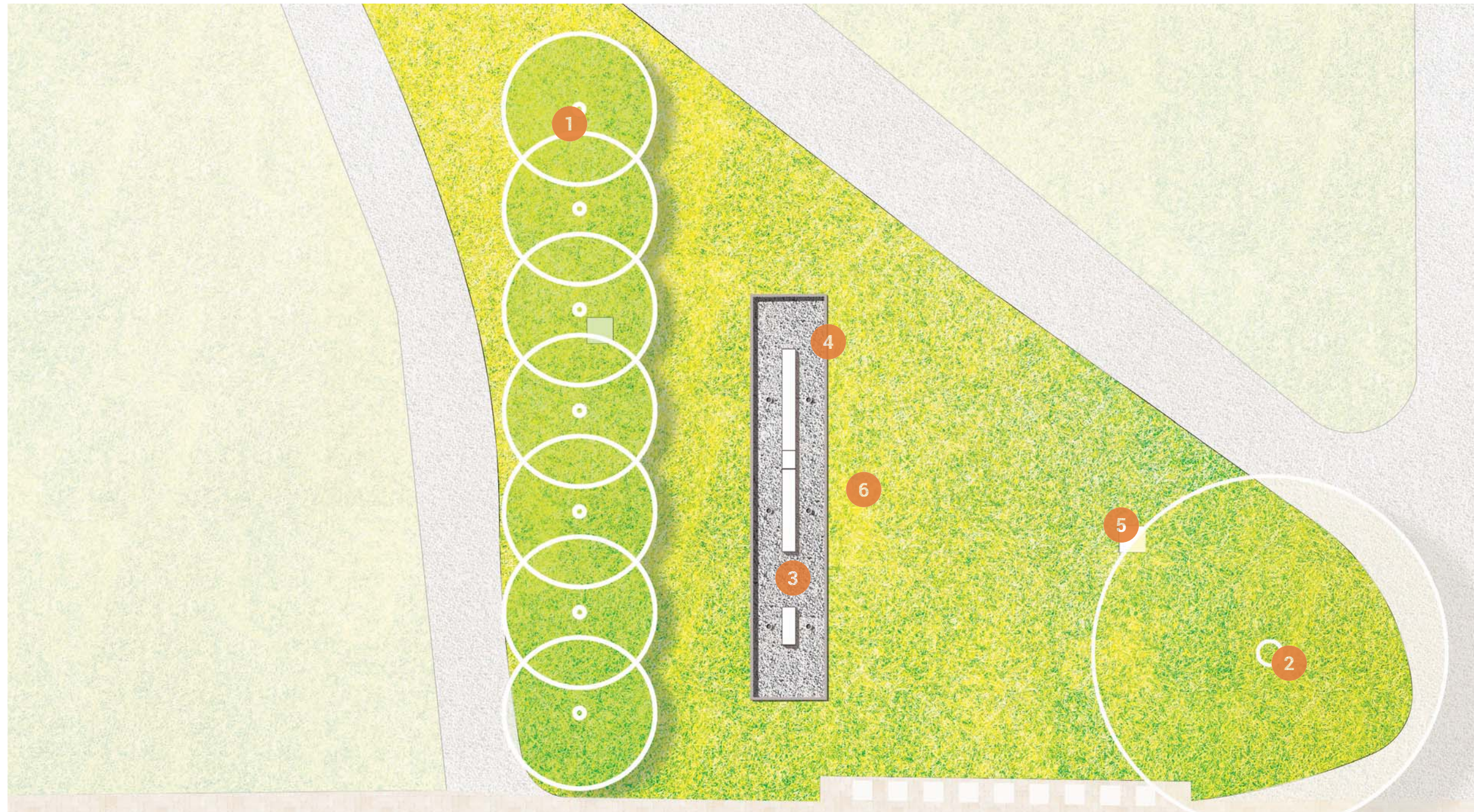


UNIVERSITY OF HOUSTON  
PUBLIC ART COLLECTION ENHANCEMENTS

aSakura  
robinSon

# MENASHE KADISHMAN

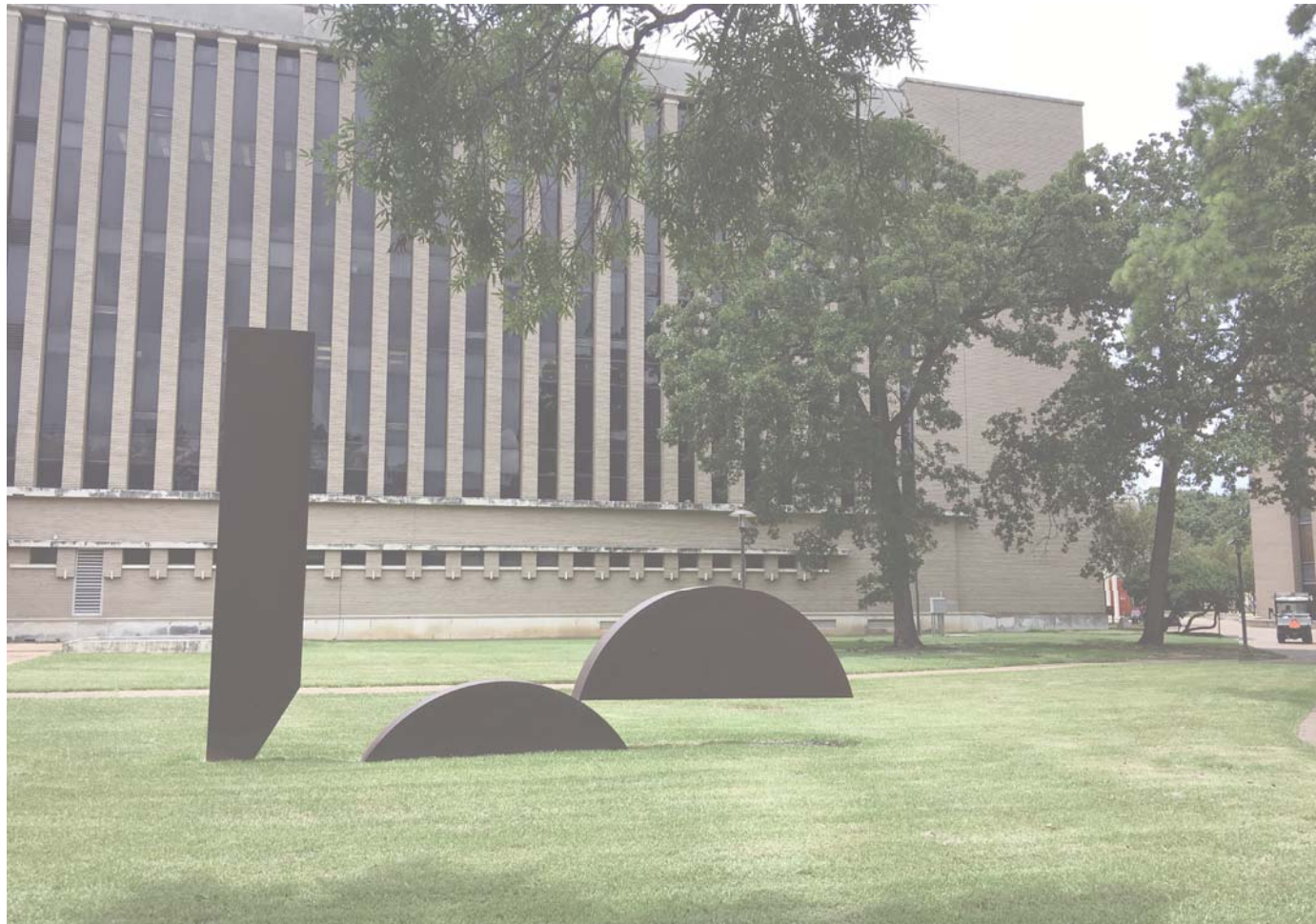
SCULPTURE PAD + PLANTING



- 1 Magnolia Tree
- 2 Existing Oak Tree
- 3 PACS Gravel
- 4 PACS Sculpture Pad
- 5 Existing Drainage Inlet
- 6 Fine Grading

MENASHE KADISHMAN

BEFORE



AFTER



UNIVERSITY OF HOUSTON  
PUBLIC ART COLLECTION ENHANCEMENTS

aSakura  
robinSon

# RICHARD MCDERMOTT MILLER

SCULPTURE PAD + PLANTING + SEAT WALL REPAIR



- 1 Existing Live Oak
- 2 Brick Paver Edge
- 3 Blaffer CIP Benches
- 4 Asian Jasmine
- 5 Dwarf Yaupon
- 6 Weeding, Pruning, and Mulch
- 7 Art Sculpture Pad with Uplight
- 8 PACS Gravel
- 9 PACS Edging
- 10 Relocate Geology Display
- 11 Replace Existing Benches as Necessary

RICHARD MCDERMOTT MILLER

BEFORE



AFTER

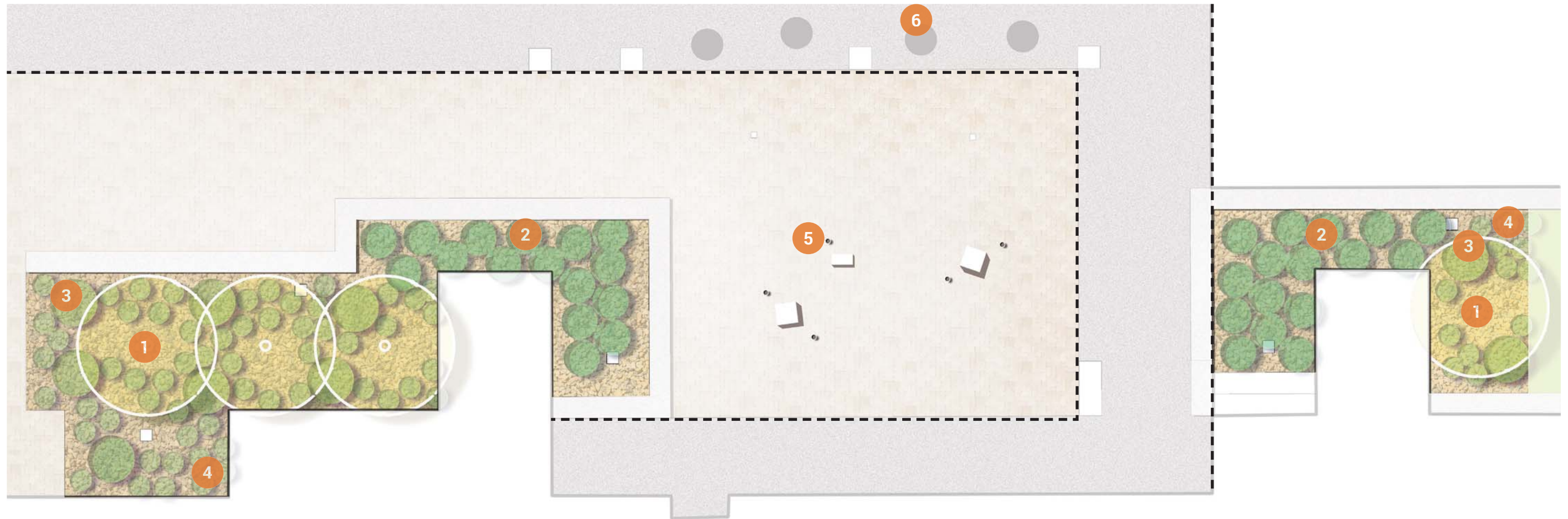


UNIVERSITY OF HOUSTON  
PUBLIC ART COLLECTION ENHANCEMENTS

aSakura  
robinson

# JIM LOVE

SCULPTURE PAD + PLANTING



- 1 Existing Redbud
- 2 Japanese Aralia
- 3 Dwarf Palmetto
- 4 Holly Fern or Ligularia
- 5 PACS Uplights
- 6 Relocate Existing Tables

JIM LOVE

BEFORE



AFTER



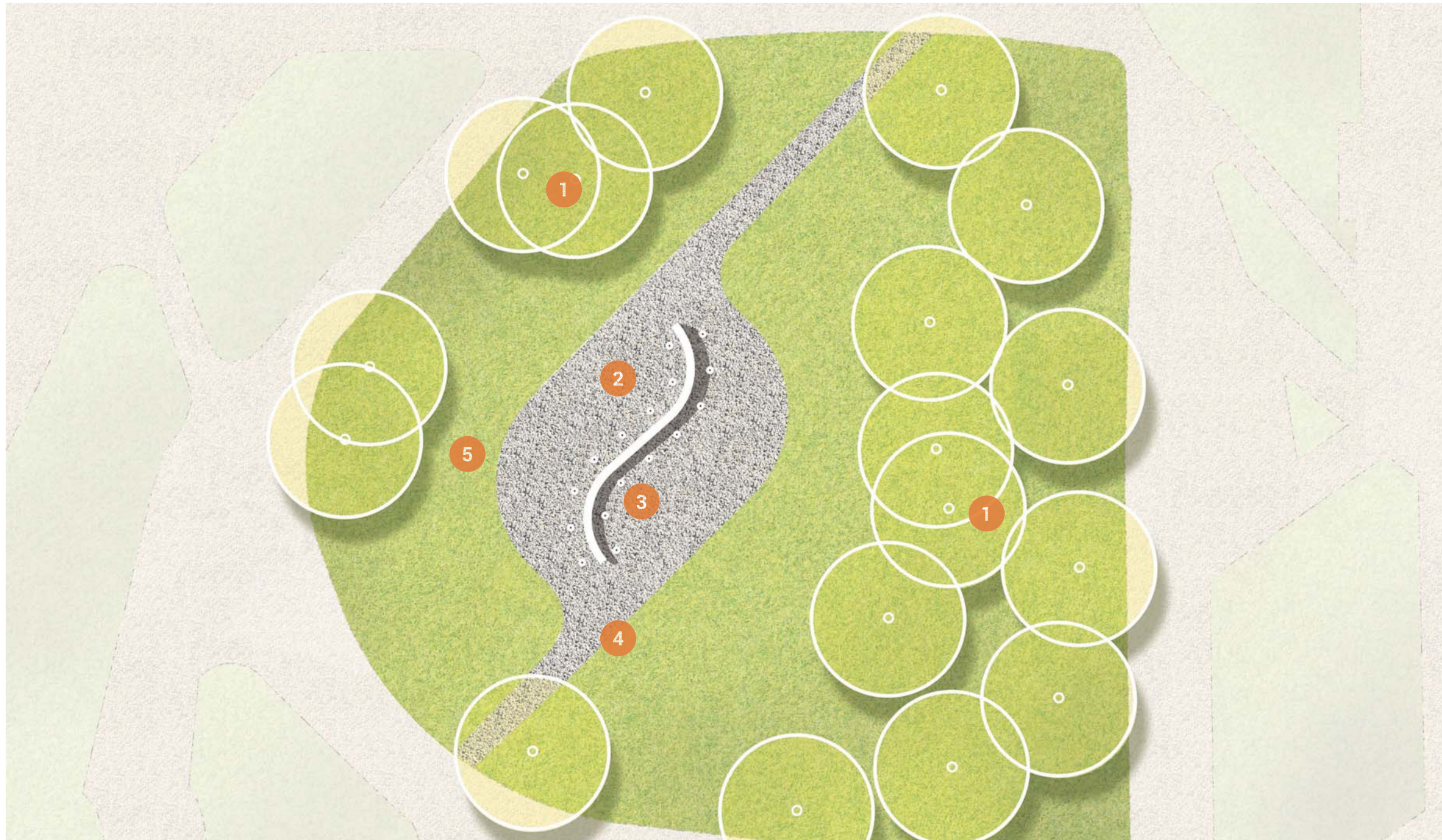
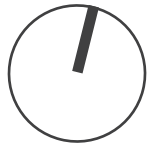
UNIVERSITY OF HOUSTON  
PUBLIC ART COLLECTION ENHANCEMENTS

aSakura  
robinSon



# CARLOS CRUZ-DIEZ

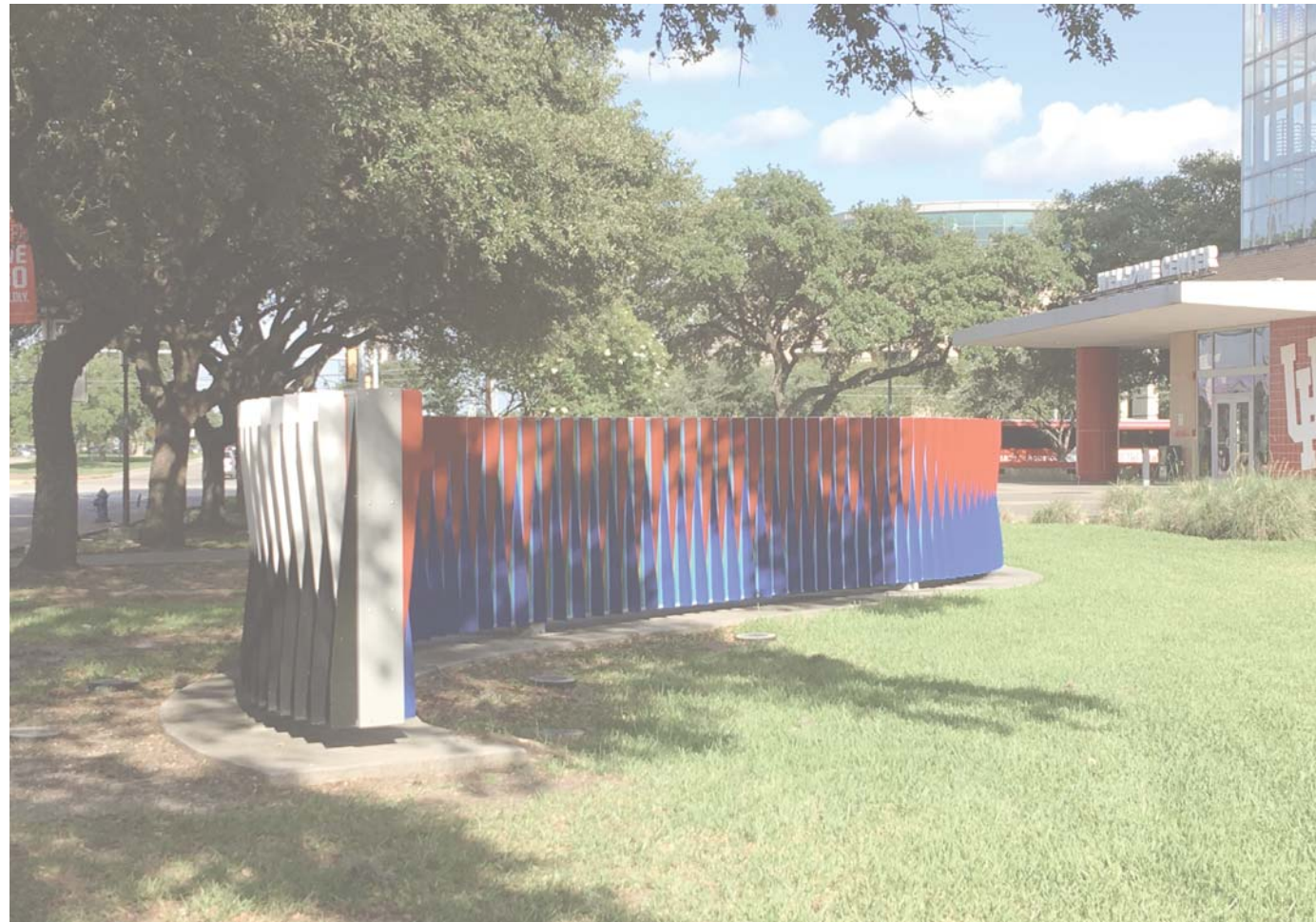
SCULPTURE PAD + PLACEMAKING



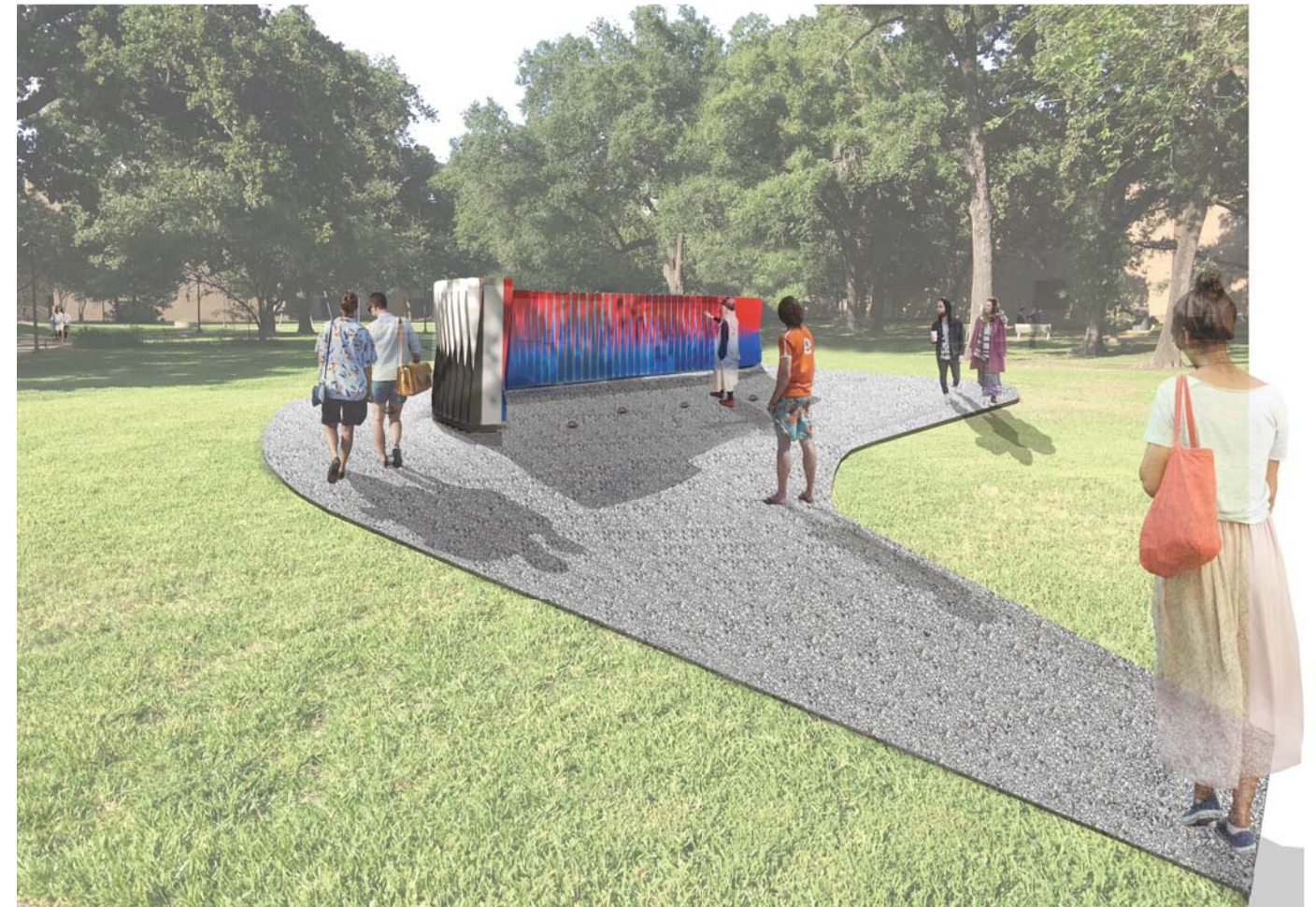
- 1 Existing Mature Trees
- 2 Sculpture Walkway + Up-lighting
- 3 PACS Gravel
- 4 Fine Grade
- 5 Positive Drainage away from sculpture

CARLOS CRUZ-DIEZ

BEFORE



AFTER



**UNIVERSITY OF HOUSTON**  
PUBLIC ART COLLECTION ENHANCEMENTS

