



CWEP Website

<http://www.sw.uh.edu/communityoutreach/cwep.php>

Volume 10 Issue 3

November 2008

## November is an exciting month!



**November is National Adoption Month**, an exciting month for raising awareness about the adoption of children and youth from foster care.

For more information, please see "Announcements" (p.3) and "The Anderson Family" (p.4).



## Director's Comments

Joe Papick

"We are having a terrific fall semester and I am looking forward to a great spring semester. This fall we are **piloting a new field placement practice** that is allowing the CWEP students some greater flexibility in their program. In the spring we will be offering a new **Child Abuse and Neglect course** that we believe will provide new and experienced students with broader knowledge and skills in serving CPS clients. We will also continue to refine and improve our field placement experiences for the students with some further changes in how we provide supervision during the field experience. These changes have come about due to the **input and feedback from your fellow students and alumni of the CWEP program** and we need you to continue to provide us with your feedback on how well things are working and what is not working well. We like to get this feedback through the **annual evaluation** we conduct in the spring semester but we also get this feedback through your input on **committees**. We have two main committees with student representatives on them and they are the Curriculum Committee and the Evaluation Committee. It is very important that we receive your input and it is also important for each student to provide feedback to their fellow students who are your representatives or directly to the staff of CWEP either through the evaluation or with direct discussions with any of us. We currently have a **vacancy on the Curriculum Committee** and would be very interested to hear from anyone who might be interested in participating with us on this committee (please also see our announcements on p.3). **Your representative on the Evaluation Committee is Renatta Kost**. It is very important to us to receive your comments so please let us hear from you and let us know if you are interested in serving as a representative on our committees."

**We NEED your FEEDBACK & SUPPORT!**



### What's inside

Director's Comments	1
Student Spotlight (Julia)	2
Announcements	3
The Anderson Family	4

### CWEP Staff

Dr. Monit Cheung  
Principal Investigator  
(Rm 424, 713-743-8107)  
[mcheung@uh.edu](mailto:mcheung@uh.edu)

Joe Papick  
Director  
(Rm 432, 713-743-1394)  
[jpapick@uh.edu](mailto:jpapick@uh.edu)

Kathy Clark  
Field Coordinator  
(Rm 434, 713-743-8157)  
[klclark@uh.edu](mailto:klclark@uh.edu)

Patrick Leung  
Project Evaluator  
(Rm 412, 713-743-8111)  
[pleung@uh.edu](mailto:pleung@uh.edu)

Ann McFarland  
Stipend Coordinator  
(Rm 444, 713-743-8145)  
[amcfarland@uh.edu](mailto:amcfarland@uh.edu)

Dr. Patricia Taylor  
Curriculum Coordinator  
(Rm 438, 713-743-8081)  
[ptaylor2@uh.edu](mailto:ptaylor2@uh.edu)

Brunessia Wilson  
Student Affairs Coordinator  
(Rm 436, 713-743-8147)  
[bwilson3@uh.edu](mailto:bwilson3@uh.edu)

Venus Tsui  
Newsline Editor, Graduate Associate  
(Rm 430, 713-743-8338)  
[sftsui@uh.edu](mailto:sftsui@uh.edu)

# CWEP Student Spotlight



This month we are highlighting

Sarnie Julia Randle

## 1. How did you come to social work?

**My path to social work was truly a calling.** I couldn't decide between psychology and law. In the process of agonizing over what to do with my life, I heard a speaker say that to identify your passion don't think about what makes you happy, think about what makes you mad. **Injustices in society and inequalities in humanity** keep me up at night. Social workers address these problems theoretically but also roll up their sleeves and do real work to help alleviate them. **Social work incorporates psychology, sociology, anthropology, and many areas, so it fulfills my myriad inclinations well.**

## 2. What was your favorite class?



**There is a six-way tie for my favorite class.** I think both Dr. Alexander's Transtheoretical Practice and Dr. Cheung's Practice with Children & Adolescents are great. This semester, Dr. Williams' Contextualized, Strengths-Based Practice and Dr. Latting's Dynamics of Leadership class stand out. **All of them have been challenging and have made lasting impressions on not only on who I am as a person, but also how I practice as a social worker and how I see the world.** I'm also doing an Independent Study with Dr. Taylor. While the other classes are broad, that research project has given me a level of singular focus and depth that I wouldn't have been able to gain otherwise. This summer I went to Mexico with two other students and took a Spanish for Social Workers course. Seeing their social service system and being immersed in a new environment increased my cultural competency. This isn't offered through UH, but I highly recommend it.



## 3. What are your hobbies?

**Hobbies**, what are those—you mean studying, writing papers and reading? ☺ Actually, my hobbies are directly related to my **self care**, so they are important to me. **Exercise, tennis, attending artistic/cultural events, reading, and meditation/yoga are integral.** In addition, **writing has been a long-lasting passion.** As I mature, I try to stay linked with the things that moved me as a child. People devalue children, but in youth you are closest to your spirit. I write poetry, short stories, and continue to publish magazine articles. I recently published an article for **The New Social Worker magazine.**

## 4. What year are you in the program?

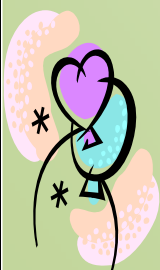
I am in my second year. **I graduate in May!**

## 5. Do you work for CPS now? If yes, what do you do and how long have you been there?

I am currently an **intern in the Adoption Prep unit at CPS.** My supervisor, Jessalyn Miller-Allen, is great. I get to see a part of CPS that society forgets exists within our agency—the formation of new families. **Seeing the joy and healing that takes place and being a part of the adoption process has been so rewarding.**

## 6. Is there anything else you'd like to share with your fellow students?

*There are two lasting bequests we can give our children. One is roots. The other is wings.*  
~Hodding Carter, Jr.



Social workers work at the service provision level to provide clients with supports to give them **roots**. We also work at a higher level of need as therapists to expand their consciousness, thereby giving them **wings**. **Social work is difficult, but it is an amazing profession!**

Many Thanks to Julia!!





# Announcements



## National Adoption Month

“**November is National Adoption Month**, a month set aside to raise awareness about the adoption of children and youth from foster care. This year's theme of adopting teens from foster care builds on the Ad Council's new public service announcement (PSA) campaign of the Children's Bureau, the Adoption Exchange Association, and The Collaboration to **AdoptUsKids**.” (Child Welfare Information Gateway)

For more details on the National Adoption Month highlights and activities, click this link <http://www.childwelfare.gov/adoption/nam/>.

## Testifying in Court for Children

In the November issue of *CenterPiece*, the newsletter of the National Child Protection Training Center, you will find an article entitled “**A Children's Courtroom Bill of Rights: Seven Pre-trial Motions Prosecutors Should Routinely File in Cases of Child Maltreatment**.” This article discusses a number of things that can be done to **reduce the anxiety children experience and to prevent courtroom practices that serve only to intimate child witnesses**.



To view this article, click the link below for Volume 1, issue 2 of the CenterPiece newsletter, [http://www.ncptc.org/index.asp?Type=B\\_BASIC&SEC={E9333BA5-535C-4A89-873A-84F19906C349}](http://www.ncptc.org/index.asp?Type=B_BASIC&SEC={E9333BA5-535C-4A89-873A-84F19906C349})

## About Families in Society (FIS)

Now in its 89th year, *Families in Society*, is the oldest and one of the most respected journals in North America on social work. FIS is a forum for addressing the interests, activities, and concerns of social and human service professionals in direct practice, management, supervision, education, research, and policy and planning. (<http://www.familiesinsociety.org/>)



**Dr. Trish Taylor** has two articles about adoption policy and practices in the issue of July–September 2008, Vol. 89, No. 3. To view these articles, please click, <http://www.familiesinsociety.org/pastissues.asp>

- *Pre-Adoptive Genetic Testing: Is the Current Policy Too Restrictive?* **Patricia G. Taylor**
- *Evidence-Based Practice or Practice-Based Evidence? What is Happening with MEPA and Current Adoption Practices?* **Susan C. Mapp, Needha Boutté-Queen, Stephen “Arch” Erich, & Patricia G. Taylor**

To browse this current issue (October-December 2008, Vol. 89, No. 4), click <http://www.familiesinsociety.org/new/E-Alerts/101408.asp>



## GCSW-CWEP Email Distribution List

“A GCSW-CWEP Email Distribution List has been created to allow CWEP staff to email announcements to our CWEP students and alumni. Announcements will include the newly published NewsLine, CWEP symposium, LMSW/LCSW Prep courses and other Continuing Education courses, Homecoming events, etc. Please send your name and email address to Brunessia Wilson ([bwilson3@uh.edu](mailto:bwilson3@uh.edu)) if you have not received her emails lately.—Dr. Monit Cheung”



## Learning Enhancement Opportunity (LEO)

**Corrine Walijarvi**, your LEO mentor for CWEP students is here for you! When you need someone to go over your presentation, outline or paper format, please email ([cwalijarvi@hotmail.com](mailto:cwalijarvi@hotmail.com)) or see Corrine during her office hours for CWEP students: **Tuesday and Thursday, 1-5pm. (Rm. 429, GCSW Bldg.)**

## Student Representative Needed

The CWEP Curriculum Committee is recruiting a **student representative**. This Committee meets once a semester to discuss curricular development issues and needs. Please contact Dr. Monit Cheung at [mcheung@uh.edu](mailto:mcheung@uh.edu) if you are interest by January 15, 2009.

LEO mentor is available  
for CWEP students only!

It will be a great  
addition to your resume!

# The Anderson Family



**“All of our children came into our home as foster children.** As their situations evolved we were given the opportunities to adopt them. Audra, Jon, and Heidi are biological siblings. Nate is their biological brother (although we have not adopted him, we are his family). Kyler and Chrystina are biological siblings.



We maintain contact with Kyler and Chrystina’s biological mother. Kyler in particular had a strong connection to her and we feel blessed that he can maintain contact with his “first” Mom. Chrystina’s biological father is from Laos and he recently taught us how to make “sticky rice” a staple in the Laos culture.



**Audra** came into our home when she was nearly 5 yrs old. She has substantial developmental delays and a border line I.Q. She is a girl with a heart of gold – always willing to try and works hard.

**Jonathan** came into our home when he was a little over 2 yrs old. He was born with mild Spina Bifida – it has not affected his functionality at all. He is a bright - high energy boy that is active in sports.

**Heidi** was a year old when she came to us. She is a ray of sunshine! A warm hearted caring young woman, she likes crafts, reading and tumbling. She loves to sing.

**Kyler** was 3 ½ when he came to us. His biological father is from Vietnam. He had some major respiratory issues – most of which have since gone away. He has allergies and mild asthma – but that does not slow him down! He is a very high energy guy – always in motion. He has an upbeat personality and a caring soul.

**Chrystina** came to us when she was 18 mos. She is our Princess Diva! She is full of self confidence! She has a very caring personality and had been recognized for stepping in to help other children at school. She loves to joke and tease and laughs often. And she has a very beautiful smile!

Austin came to us when he was 18 mos. He is a high energy guy. He is very curious and tries to figure out how every thing works. If it has buttons – he’s pushing ‘em!

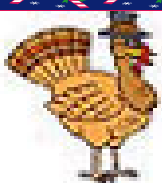
We cope with some emotional and some behavioral issues with each of our children. It’s not always easy and we don’t always handle every situation the “right” way. We get tired and frustrated just like everyone else – but we keep trying. **Seeing the children smile when they accomplish something is the best reward!”**



Source: This text is directly retrieved from <http://www.adoptuskids.org/resourceCenter/parentSupport/familyStories/anderson.aspx>

[AdoptUsKids is dedicated to increasing the public awareness of foster care and adoption.](http://www.adoptuskids.org/)

(<http://www.adoptuskids.org/>)



## HAPPY THANKSGIVING!