

UNIVERSITY of HOUSTON

GRADUATE COLLEGE of SOCIAL WORK

CELEBRATING **50** YEARS



1968 | 2018

Our **Vision**
To **achieve**
social, racial, economic
and political
justice
local to global.



Our vision is inspired by social justice trailblazers who came before us, who laid the groundwork, who fought, worked, marched, and sometimes died for the belief that we can achieve justice — for all.

Begin your **social work journey** with the **GCSW**.

In 2018, the University of Houston Graduate College of Social Work (GCSW), celebrates 50 years of social work education as a top 25 ranked social work program.* From its humble beginnings, today GCSW is a destination for those who will define social work's future. In 2016, the College adopted a bold vision to achieve social, racial, economic, and political justice, local to global. We invite you to learn more about us and hopefully to join us in achieving our vision whether as a student, social work colleague, or community supporter.

Here you will find a home alongside many of social work's boldest, most esteemed scholars, including a Nobel Peace Prize winner, and an author of multiple New York Times Best Sellers. Moreover, GCSW is a dynamic environment, which supports inspired academics, innovative research, authentic community outreach, and enduring connections among those who study, teach, and empower social work's enduring promise.

*(Source: US News & World Report, 2018).

GCSW, a College in a Tier One research university and designated a Hispanic-Serving Institution, **mirrors the diversity of Houston**, the nation's fourth most populous city, home to more than two million residents, deep-rooted ethnic communities and the world-renowned Texas Medical Center. Our MSW and PhD students hail from near and far, embodying an impressive array of origins, ages, experiences, outlooks, and aspirations.

Ours is a community grounded in the principles of social justice, that thinks critically, embraces challenges, and acquires knowledge through experience.

We are colleagues, benefiting from authentic connections among students, faculty, staff, and alumni.

Learn more about how you can become a part of our vibrant community, committed to social justice, and sustainable change.

CELEBRATING **50** YEARS

fifty

#24 NATIONALLY RANKED
AMONG SOCIAL WORK PROGRAMS*

TIER 1 RESEARCH UNIVERSITY

NATION'S **4th**
MOST POPULOUS CITY.

UNIVERSITY OF
HOUSTON
GRADUATE COLLEGE of S

Collaborative Scholarship

A key component of an urban-focused Tier One research university, GCSW advances multidisciplinary, translational, and transformative research, which aligns with the policies of the National Institutes of Health and the National Science Foundation. Our college contributes significantly to community advancement, and biomedical sciences connecting those in various disciplines across a multi-campus system to industry partners and funding agencies. MSW and PhD students benefit from GCSW's rapidly accelerating research efforts, which are realized through inspiring and innovative methodologies, tools, and techniques. Moreover, Houston's incredible diversity, numerous social service agencies, world-renowned medical center, global enterprises, and industry research sectors provide for a dynamic and fertile "testing ground."

GCSW is home to five multidisciplinary research centers. These centers serve faculty, students, and an international community of collaborators who strive to enrich the knowledge and practice of social work.

CENTER FOR DRUG AND SOCIAL POLICY RESEARCH

As a multidisciplinary university research center, the objective of the CDSPR is the development of new knowledge in substance abuse and related social problems.

CHILD AND FAMILY CENTER FOR INNOVATIVE RESEARCH

The CFCIR hosts and collaborates with experts from behavioral science, social work, public health, medicine, history, psychology, computer science, and virtual reality technology to solve problems related to social functioning of children and their families through the use of innovative devices and approaches.

CENTER FOR LATINA MATERNAL AND FAMILY HEALTH RESEARCH

LMFHRC's mission is to improve the health of Latino families through research and service that aims to increase public awareness, health service delivery, and culturally responsive research for vulnerable populations of Latinas and their families. The Center seeks interdisciplinary collaborations between social scientists, community organizations, health care providers, and scholars.

CENTER FOR MENTAL HEALTH RESEARCH AND INNOVATIONS IN TREATMENT ENGAGEMENT AND SERVICE

MH-RITES Center has at its core a vision to improve the lives of individuals managing mental health issues through research, education, and clinical treatment.

SUSTAIN WELLBEING COMPASS COORDINATING CENTER

SUSTAIN (Supporting U.S. Southern States to Incorporate Trauma-Informed HIV/AIDS Initiatives for Wellbeing) enhances HIV/AIDS prevention and treatment by incorporating attention to the roles of wellness, trauma, mental health, and substance use, especially opioid use.



COLLABORATIVE

Education for Social Work's Next Generation

Established in 1993, the GCSW PhD Program continues to empower those who define social work's future. Equipped to become influential scholars, teachers, researchers, and leaders, our PhD graduates advance the field's knowledge base, promote evidence-based interventions, and champion the values of social justice.

The GCSW PhD Program offers students the opportunity to:

- Facilitate change through rigorous and contextualized analysis of social problems, and evidence-based social work interventions
- Apply analytical models and multi-disciplinary theories in the study of problems and human behavior
- Focus on innovative methodologies in knowledge building
- Conduct translational research from problem-solving to real-life solutions
- Foster individual connections and collaborative mentorship
- Write competitive grant applications



OUR STUDENTS ARE PEOPLE FIRST

GCSW places a high priority on **doctoral student support**, making every effort to assist students during their educational endeavors. Numerous scholarships, assistantships, fellowships and financial aid opportunities are available.

PhD Program coursework can be completed in two to three academic years, with nine to 12 credit hours per semester, followed by an original PhD dissertation of publication quality.

In addition, GCSW welcomes applicants without a master's degree in social work to pursue a program of study that leads to both MSW and PhD degrees. Upon acceptance to both the MSW and PhD Programs, the coursework for this dual degree program can be completed in approximately three-and-a-half years, with an additional six months to two years allotted for doctoral dissertation.

Our **PhD Program** embraces and nurtures passionate, self-aware, **confident students** who possess a **passion for research** and the ability to assume a **leadership role** in the **social work** profession.



Sheara Williams Jennings, PhD
Associate Professor | Associate Dean for Doctoral Education

Our PhD Program embraces and nurtures passionate, self-aware, confident students who possess a desire for research and to assume leadership roles in social work education and research. Located in an incredibly diverse city, an international gateway and home to one of the world's leading medical centers, GCSW offers abundant opportunities for research, engagement and outreach. As an autonomous college, GCSW also allows for authentic, one-on-one connections between our students and esteemed faculty members, who are personally invested in our PhD students' success. Applying what they've learned – the art of teaching and the science of advanced research – our graduates have done amazing things: achieving tenure, full professorship, and even establishing new schools of social work. For all these reasons and more, GCSW is poised to become a national program of destination for those pursuing a doctorate in social work.

MSW PROGRAM

Established by the Texas Legislature in 1967 and fully accredited since 1970, the University of Houston GCSW provides master's level education for the practice of professional social work with the goal of enhancing social functioning of all persons as individuals, family members, community participants, and members of society. The UH MSW program consists of 63 semester credit hours for the full program or 38 semester credit hours for the Advanced Standing option. For full program students, we offer a unique 16 hour foundation, serving as the prerequisite for all advanced coursework, including courses in Social Work Practice, Policy, Research, Human Diversity and Development, as well as a field practica.

All students complete advanced courses in Social Policy Analysis, Evaluation, Confronting Oppression and Injustice, and 12 credit hours in their chosen concentration of study in either Clinical Practice or Macro Practice. Additionally, students complete at least one crossover concentration course and a minimum of 9 credit hours of free-choice elective coursework.

Full program students complete 900 hours of field work in two different settings and advanced standing students complete 500 hours in one advanced practice setting.



CLINICAL PRACTICE

Clinical Practice is the application of theories, methods, skills and ethics for the enhancement of cognitive, mental, emotional and social well being of individuals, couples, families, groups and communities. Clinical Practice requires leadership in promoting social, racial, economic, and political justice. Its methods are relationship centered, contextualized, culturally sensitive and strengths focused.

Clinical Practice calls upon knowledge surrounding biopsychosocial functioning and evidence-based interventions. It can include assessment and intervention, diagnosis and treatment, education and prevention, advocacy, counseling and psychotherapy, as well as supervision and consultation.



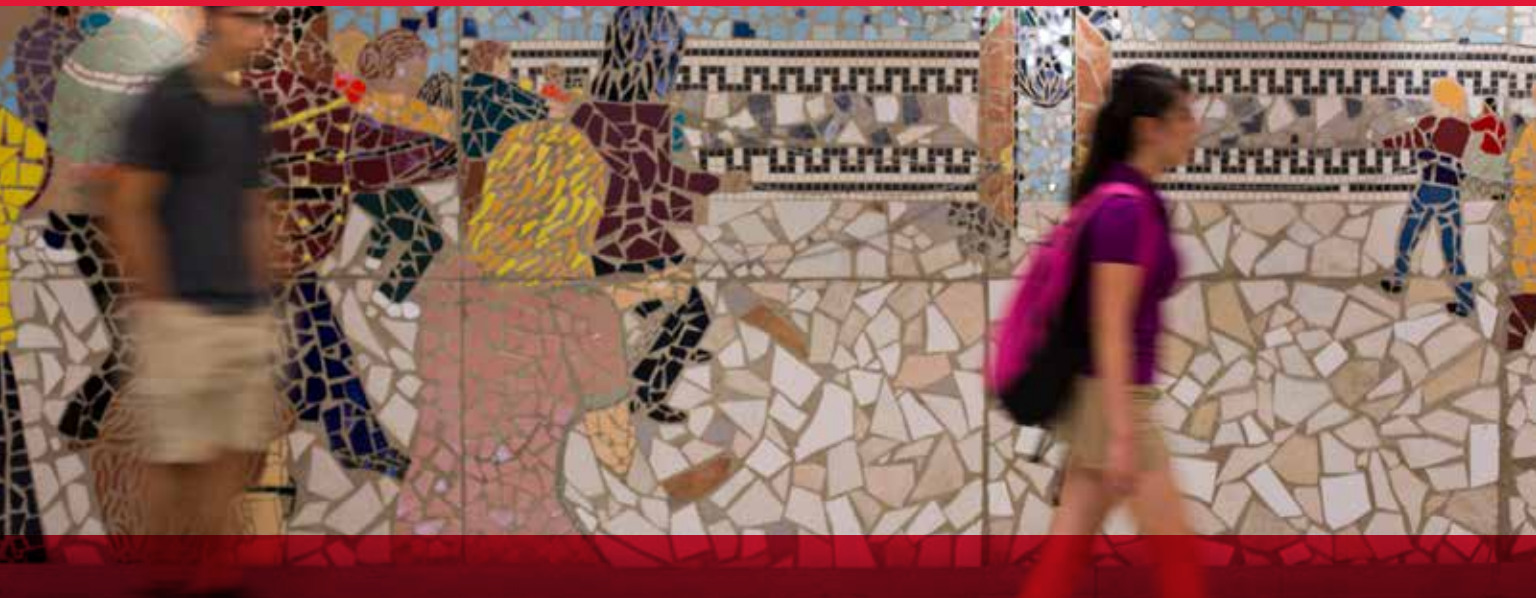
Areas of
SPECIALIZED PRACTICE

MACRO PRACTICE

Macro Practice prepares students for work in settings where the needs of diverse, vulnerable populations require highly skilled, professional leaders. Practice in both public and private organizations is designed to promote progressive social change that contributes to the growth and empowerment of individuals, agencies and communities. Core concepts and practice skills are developed for work at the organizational, community, societal and global levels. Students are prepared to assume leadership positions as advocates, managers,

program planners, researchers, policy analysts and agency and community-capacity builders at the organizational, community, societal and global levels.





ENROLLMENT OPTIONS

FACE TO FACE FULL-TIME

The GCSW offers a face-to-face program at the main UH campus that can be completed in two years for full-time, full program students or one year for full-time advanced standing students. Students take classes during the day and evening and complete field work during daytime hours. Full-time students enroll in 12 to 16 hours (4 – 5 classes) each semester. Students can participate in one of two Areas of Specialized Practice; Clinical Practice or Macro Practice. They may also select one of four specializations: Health and Behavioral

Health, Political Social Work, Social Work Practice with Latinos or the Individualized Specialization option. Full program students are assigned to a cohort for the foundation curriculum which helps them build a strong support network.



HYBRID PART-TIME

Main Campus UH Sugar Land Campus

GCSW's Hybrid Program is designed to provide those who are currently employed in social work and related fields the opportunity to pursue an MSW. Students in the Hybrid Program participate in either the Clinical or Macro Area of Specialized Practice with several choices for specializations and meet for classes no more than two Saturdays per month. Courses take place face-to-face and online.

For the Foundation Year placement the Field Education office matches students with an agency that offers a flexible schedule. However, students are required to have flexibility in their schedule during business hours. For the advanced placement, students will attend our field agency marketplace in the spring and interview with agencies. There is no guarantee of a placement with only evening/weekend hours. The program is completed in three years for full program students and two years for advanced standing students. Students attend classes as a cohort together.

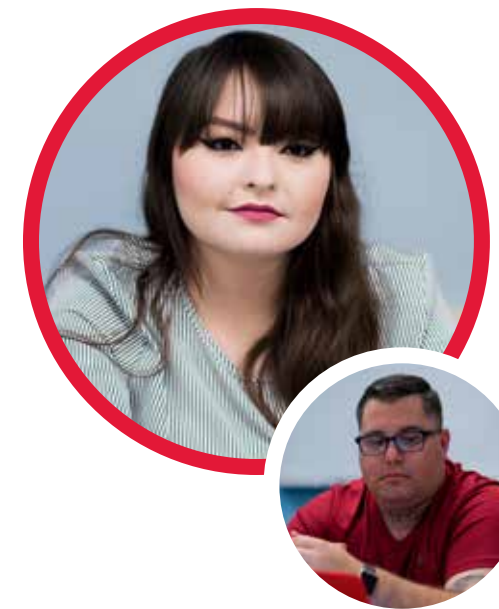
ONLINE PART-TIME

The Online MSW program is a great option for independent, self-motivated learners requiring a flexible schedule. Students are assigned to a cohort with which they take the majority of their classes. Students can participate in the Clinical or Macro Area of Specialized Practice and have several choices

for specializations. For field placement, students work closely with the Field Education Office to identify qualified agencies in their area. Similar to the hybrid program, the online program is completed in three years for full program students and two years for advanced standing students.

ADVANCED STANDING

Applicants holding a Bachelor of Social Work (BSW) degree from a Council on Social Work Education (CSWE) accredited undergraduate program may request review for Advanced Standing, an accelerated MSW program. Advanced Standing is available in any of the enrollment models.



The GCSW is committed to educating highly trained social workers who can meet the high needs and demands of the Houston area and the broader Gulf Coast region. MSW Clinical and Macro students have the option to further focus their advanced studies through four specializations designed to enable students to develop specialized skills and knowledge in defined areas of social work practice. Three of these specializations: Health and Behavioral Health, Social Work Practice with Latinos, and Political Social Work offer students the opportunity to focus their advanced studies in substantive areas of social work. Specializations were developed to respond directly to pressing needs of vulnerable populations in the Houston community, and enable students to benefit from the GCSW's long-standing relationships with community agencies engaged in practice in these areas. The fourth specialization, Individualized Specialization, offers students the opportunity to develop advanced knowledge and skills in a substantive area of social work of interest to them.



SPECIALIZATIONS

DUAL DEGREE OPTIONS

HEALTH AND BEHAVIORAL HEALTH

This innovative program is designed to prepare students with the advanced knowledge and skills necessary to meet the growing demands in Texas and nationally for social workers with advanced training in healthcare, mental health, and substance abuse.

POLITICAL SOCIAL WORK trains students to develop the advanced political skills necessary to promote social, racial, economic, and political justice on behalf of many vulnerable populations.

INDIVIDUALIZED SPECIALIZATIONS enable students to focus their studies and field work on a specific population, social issue, or practice area of interest to them.

SOCIAL WORK PRACTICE WITH LATINOS enables students to gain advanced knowledge and skills for engaging with Latino families and communities.

DUAL DEGREE OPTIONS

Collaborative degree programs are available that enrich options and opportunities for GCSW students. Dual degree programs allow students to earn two degrees in less time than it would take to complete them sequentially. Students interested in a dual degree must be admitted separately to each of the programs. Admission to one has no official bearing on admission to the other. Since admission to two programs is required, candidates are encouraged to begin the application process early.

In addition, it is recommended that students plan to complete the dual degree options as full-time students, as university policy requires students to complete an MSW within five years.

Options for dual degree programs include:

- MSW/PHD (IN SOCIAL WORK)
- MSW/MBA (MASTER OF BUSINESS ADMINISTRATION)
- MSW/MPH (MASTER OF PUBLIC HEALTH)
- MSW/JD (DOCTOR OF JURISPRUDENCE)
- MSW/MPP (MASTER OF PUBLIC POLICY)

GCSW boasts a long, proud history of engagement with the Houston community. The college's groundbreaking field education program is at the heart of this mutually beneficial connection. While acquiring hands-on experience in the field, MSW students also increase the capacity of agencies serving those in urgent need. Many students are attracted to GCSW specifically because of the myriad unique opportunities and affiliations allowing for experiences working with groups combating human trafficking, international study opportunities, and the college's Austin Legislative Internship Program. But these are only a few of the many ways our field education program encourages students to pursue their passion for social justice. Sometimes, our MSW students arrive expecting an education based largely in the classroom. Thanks to field education, they graduate with an enriched sense of the applied knowledge it takes to be a social work professional.

Unique **Field Placements**

- Habitat for Horses
- The Michael DeBakey VA Medical Center
- The Daring Way with Brené Brown (PAID)
- Austin Legislative Internship Program
- Chinese Community Center
- Harris County Institute of Forensic Science
- League City Police Department
- The Council on Recovery
- The Montrose Center
- Pasadena Independent School District Behavior Response Team
- Third Ward Community Cloth Project
- Refugee Services of Texas, Inc.



FIELD



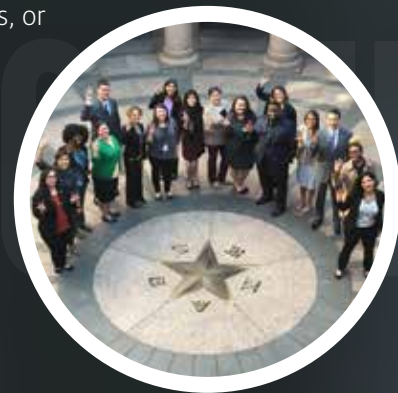
education

AUSTIN LEGISLATIVE INTERNSHIP PROGRAM

The Graduate College of Social Work selects graduate students to intern at the Texas Legislature during its legislative session every two years. This internship is a block placement, open to both Clinical and Macro students, and academic credit is provided. It requires relocation to Austin for the entire Texas legislative session (January – June) and offers an excellent opportunity to experience firsthand how policy is made in Texas. Student interns work as full-time staffers in the Legislature, either as policy analysts with the Legislative Study Group, a caucus of the Texas House of Representatives, or in legislators’ offices.

Each session, GCSW interns help the Texas Legislative Study Group compile analytics and policy information.

The Austin Legislative Internship is one of very few opportunities nationally for social work students to participate full-time in the legislative policy-making process. Both Clinical and Macro students report that this is an incredible and useful learning experience, one that often changes their lives. Clinical interns often find that they better understand how policy impacts practice and feel more equipped to support their agencies in advocating for policies to meet clients’ needs. Macro students gain valuable insight into the policy-making process and are competitive for policy advocacy jobs requiring prior legislative experience.



CWEP



Child Welfare Education Project (CWEP) Stipends are awarded to incoming and current MSW students focused on preparation

for the challenging and rewarding work in Child Protective Services.

CWEP program participants receive substantial financial support, field experience in child welfare, and mentorship from practitioners with expertise in the field. Students repay the stipend through professional employment at Child Protective Services after receiving their MSW degree. CWEP is a great opportunity for students passionate about gaining hands on experience in order to make an immediate impact in the lives of children.

GLOBE



The Global Leaders of Behavioral Health Education program at GCSW prepares students for advanced practice in behavioral health with vulnerable populations including children, adolescents, and transition age youth (under 26 years old). Funded by a federal grant totaling close to \$3 million to date, GCSW’s GLOBE programs respond proactively to the forecast of a critical shortage of mental and behavioral health providers in the coming years, especially those trained in assessment and intervention of mental illness and co-occurring disorders.

GLOBE Fellows receive training that enhances their field practicum experience through workshops, coursework, field education, and significant financial support. Selected from a competitive application process, GLOBE fellows are placed in Harris County agencies where they receive hands-on training and supervision. Fellows agree to work with underserved, vulnerable populations for a minimum of two years in Harris County after graduating with their MSW.

A comprehensive program, GLOBE draws upon community connections and collaborations, providing workshops open to GLOBE fellows, area agencies, and social work practitioners.

TRAUMA EDUCATION PROGRAM

TEP The Trauma Education Program (TEP) prepares MSW students for trauma-informed, evidence-based, and culturally-sensitive practice. Through a competitive process, Trauma Fellows are selected and receive additional specialized education, research, and opportunities for collaborations with community organizations.

The program’s goal is to work toward building a mental health workforce of social workers trained to serve traumatized individuals, families, and communities. Trauma students are prepared for trauma-informed practice by learning a framework for understanding trauma, and the significant impact trauma has on children, adolescents, adults, and older adults. The mission of the TEP includes field sites and curriculum that prepares students to work with traumatized individuals of all ages.

Additionally, the TEP provides a framework for acquiring trauma-informed and evidence-based skills necessary for effective trauma interventions. This is accomplished through field experiences during the second year field practicum/clinical experience as Trauma Fellows are placed in agencies with expertise in a variety of trauma-informed interventions. These experiences allow for the practical application of evidence-based trauma treatment interventions with targeted populations.

Opportunities
OPPORTUNITIES



JODY WILLIAMS

Sam and Cele Keeper Endowed Professor in Peace and Social Justice

Each fall, Jody Williams, a Nobel Laureate and international expert in issues of activism teaches a course in Global Justice where GCSW students can learn from an activist on the world stage whose work spans both continents and decades.

In 1997, Williams received the Nobel Peace Prize for her work as founding coordinator of the International Campaign to Ban Landmines, which shared the Peace Prize with her that year. She is one of only 16 women to have received the Prize and only the third American woman.

Ms. Williams has received myriad honors, including 15 honorary degrees. In 2003, she was named Distinguished Visiting Professor of Global Justice at GCSW. She was appointed the Sam and Cele Keeper Endowed Professor in Peace and Social Justice in 2007.

Global Justice challenges the views of MSW students to consider social work from a global perspective. Jody Williams offers students current and fresh lessons gleaned from her continued activism including as a founder of the Nobel Women's Initiative.

Representing five continents, the initiative uses the prestige of the Nobel Peace Prize and the influence and access of the women Nobel Laureates themselves to support and amplify the efforts of women around the world working for sustainable peace with justice and equality.



DR. BRENÉ BROWN
Huffington Foundation Brené Brown Endowed Chair

On campus and beyond, connections are at the heart of Dr. Brown's efforts. How do we learn to embrace our vulnerabilities and imperfections so that we can engage in our lives from a place of authenticity and worthiness? Questions

such as this have inspired Dr. Brené Brown's research for more than a decade. Building upon her intensive study of vulnerability, courage, worthiness and shame, her books have topped The New York Times Best Seller list multiple times. Her groundbreaking work has been featured on PBS, NPR, and CNN and has appeared in The Washington Post and Psychology Today. While cultivating a career as a nationally renowned author and speaker, Dr. Brown's roots have remained firmly planted in Houston. Since earning her PhD at GCSW in 2002, students have benefited from Dr. Brown's unique understanding of advocacy-based social work research, political social work, feminist practice and social justice through a course she teaches each year and a field placement opportunity.





FUNDING your GRADUATE PROGRAM

OVER **\$1 MILLION** AWARDED IN SCHOLARSHIPS TO MSW STUDENTS ANNUALLY

ANY NON-TEXAS RESIDENT WHO RECEIVES A SCHOLARSHIP OF **\$1,000** OR MORE WILL RECEIVE IN-STATE (RESIDENT) TUITION RATES.

A MAJORITY OF OUR FULL-TIME **PHD STUDENTS** ARE OFFERED FELLOWSHIPS, SCHOLARSHIPS, A TUITION WAIVER, AND HEALTH INSURANCE STIPEND.

ADMISSIONS REQUIREMENTS

MSW ADMISSIONS

To be considered for admission to the MSW program, applicants must hold a bachelor's degree from an accredited college or university with a GPA of 3.0 or better (4.0 scale) for the last 60 hours of academic coursework. The undergraduate education must reflect a sound liberal arts foundation, including courses in the humanities, as well as in the social, behavioral, and biological sciences.

ADVANCED STANDING FOR BSW GRADUATES

Applicants holding a Bachelor of Social Work degree from a Council on Social Work Education accredited undergraduate program may request review for

Advanced Standing admission. Advanced Standing applicants must meet all regular GCSW admissions requirements, plus have achieved a GPA of 3.0 or better (4.0 scale) for the social work major.

CONDITIONAL ADMISSION

An applicant whose GPA is below a 3.0 for the last 60 hours of academic work may be admitted conditionally if they hold a 2.6 or better (4.0 scale) and meet additional admissions requirements.

SOCIAL WORK TRANSFER STUDENTS

Those transferring from a CSWE accredited MSW program must meet all regular admissions requirements **AND** submit:

- Statement of Good Standing from the dean or director of current program
- Syllabi for courses completed

A maximum of 30 hours credit, under certain conditions, can be transferred for credit toward the GCSW degree.

PHD ADMISSIONS

To be considered for admission to the PhD program, applicants must hold a master's degree in social work (MSW) from a CSWE accredited program OR hold a

master's degree in a related social science discipline from an accredited program with a grade point average of 3.5 or better (4.0 scale) in all previous undergraduate and graduate work. Applicants who do not meet the minimum 3.5 GPA requirement but who demonstrate excellence in other areas of the application may be considered. Graduate Record Exam (GRE) scores are required.

WANT TO LEARN MORE?

Throughout the year, GCSW welcomes prospective MSW and PhD students to on-campus and online information sessions.

Visit uh.edu/socialwork for details or e-mail gcswinfo@uh.edu if you have questions.

ADMISSIONS CHECKLIST

MSW PROGRAM APPLICATION CHECKLIST

- Application Fee
- Official transcripts
- Letters of Recommendation
- Personal Statement
- Resume
- TOEFL or IELTS Scores (for international applicants only)

*Graduate Record Exam Scores are **NOT** required. You may send them if you wish, but they do not factor heavily in the admissions decision for the MSW program.

PHD PROGRAM APPLICATION CHECKLIST

- Application Fee
- Official transcripts
- Official Graduate Record Exam (GRE) scores* (Less than 5 years old)
- TOEFL or IELTS scores (for international applicants only)
- Letters of Recommendation
- Research Statement
- Writing Samples
- Vita|Resume

International applicants have additional requirements. To learn more about them, visit uh.edu/graduate-school/admissions. Other materials may be requested after you apply. Visit uh.edu/socialwork for a detailed list of requirements.



uh.edu/**socialwork**

f fb.com/**uhgcsw**

 @UH_**SocialWork**

UNIVERSITY of **HOUSTON**

GRADUATE COLLEGE of SOCIAL WORK

CELEBRATING **50** YEARS